

# **Operation Guide**

**iSmartViewPro 2.0**

**( For Mac PC )**

---

---

**Mar, 2015**

**Rev1.0**








## Statement




If the user manual doesn't help you to resolve the problem, please contact us via our website for technical support.

## Notice

### 1、 Installation Environment

-  Keep away from the places of high-temperature, heat sources and direct sunlight.
-  Keep away from water and if wet, cut off the power immediately.
-  Avoid using in a damp environment; the reference range for operation humidity is below 85%RH.
-  Avoid using in too hot or too cold environments, the reference range for operation temperature is  $-10^{\circ}\text{C}\sim +50^{\circ}\text{C}$ .
-  Please install it horizontally or wall mount, avoid strenuous vibration and do not place other items on top of the unit.

### 2、 Transport and Handling

-  Please handle the item with care.
-  Do not use in areas around condensation.
-  Please disconnect the item from the mains before moving.



#### Notice:

1. Be careful not to damage the camera or subject it to strong impacts or shocks.
2. Do not touch the optical components for the image sensor, such as the lens, if necessary, please place a clean and moistened cloth with alcohol and wipe the dirt gently; When not in use, please place the dust cover on to the item to protect the image sensor.
3. Do not aim the camera directly into the sun or at other intense light sources that could affect the image quality, this will also shorten the service life for the image sensor.



4. Keep away from laser when it is working, otherwise the image sensor can be damaged.
5. If the equipment is not working properly, please contact the store or the service centre, do not disassemble or modify the equipment in any way.



## Index

Index.....	4
iSmartViewPro 2.0 Introduce.....	5
Required PC running configuration:.....	5
Install iSmartViewPro 2.0.....	6
iSmartViewPro 2.0 Application Introduce.....	6
iSmartViewPro 2.0 Operation .....	8
Status bar .....	8
Function Menu Area .....	8
Device Library(Device Management).....	8
Add Camera.....	9
Set up camera.....	9
Delete Camera.....	12
Deice List .....	14
Video Library .....	15
Live Video.....	17
Local Record .....	18
Remote Record.....	19
System Setting(Local Setting).....	20
Camera Log.....	21



## iSmartViewPro 2.0 Introduce

iSmartViewPro is a Cloud IP camera centralization management software provided by the manufacturer. It provides the central control of monitoring, video capture, record, alarm detection, etc for multiple IP cameras on LAN or WAN.

iSmartViewPro 2.0 support both of Mac OS and Windows OS.

The iSmartViewPro 2.0 features:

- Support SmartP2P cloud platform camera;
- Support multilingualism convert;
- Support local record;
- Support local recording playback;
- Support to play back SD card recording remotely;
- Support voice monitoring and talking;
- Support image setting;
- Support to set up PTZ and call the preset point.

## Required PC running configuration:

For using the iSmartViewPro 2.0 software stably, recommend minimum PC configuration as below:

- ☐ CPU: Dual core CPU
- ☐ RAM: above 1G
- ☐ Hard Disc: above 500G
- ☐ Operation System: Windows XP/Windows 7/Windows 8/Windows 8.1
- ☐ Monitor resolution:  $\geq 1024*768$



## Install iSmartViewPro 2.0

Get installation software of iSmartViewPro 2.0

- Get it from attached CD
- Get it from our company website

Double click iSmartViewPro 2.0.Dmg file to open it, and then slide iSmartViewPro 2.0 to copy to computer by arrow direction.



## iSmartViewPro 2.0 Application Introduce

Double click shortcut icon for iSmartViewPro to run the iSmartViewPro software as figure 1.

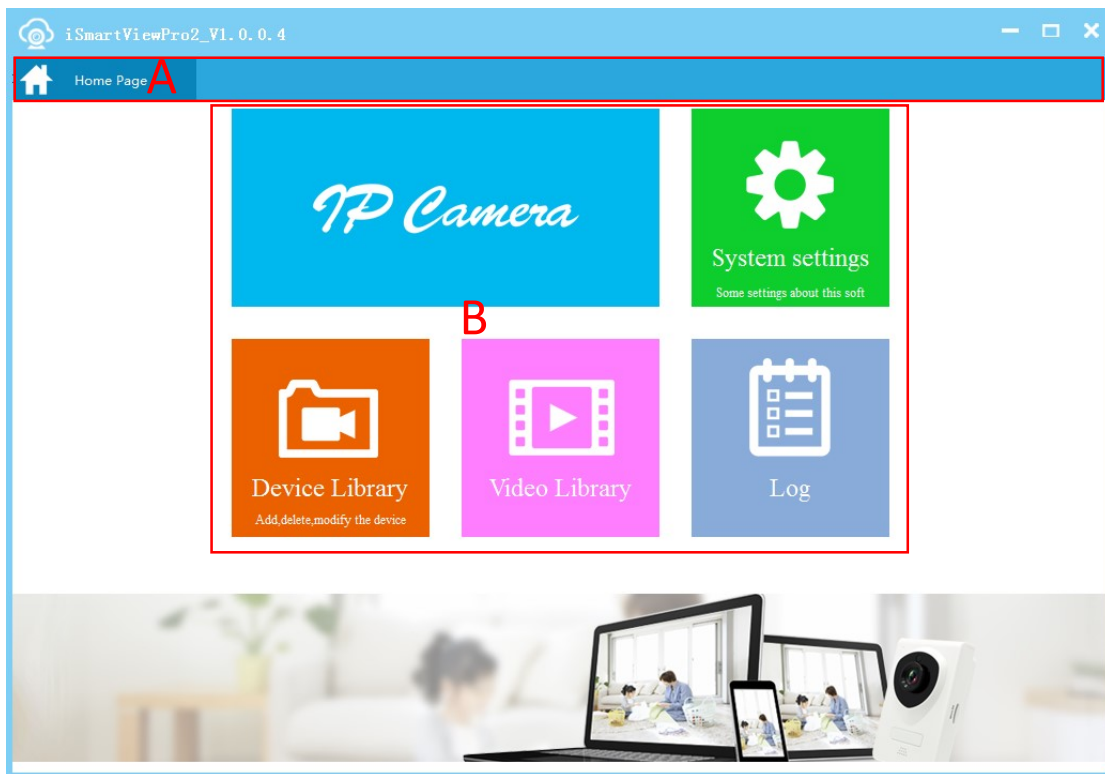


Figure 1

A: Status bar

B: Menu area



## iSmartViewPro 2.0 Operation

### Status bar

It will display in the status bar when you access to a function module in function menu as Figure 2.



Figure 2

### Function Menu Area

#### Device Library(Device Management)

You can add, delete or modify the camera and set up advance function of the camera as Figure 3.

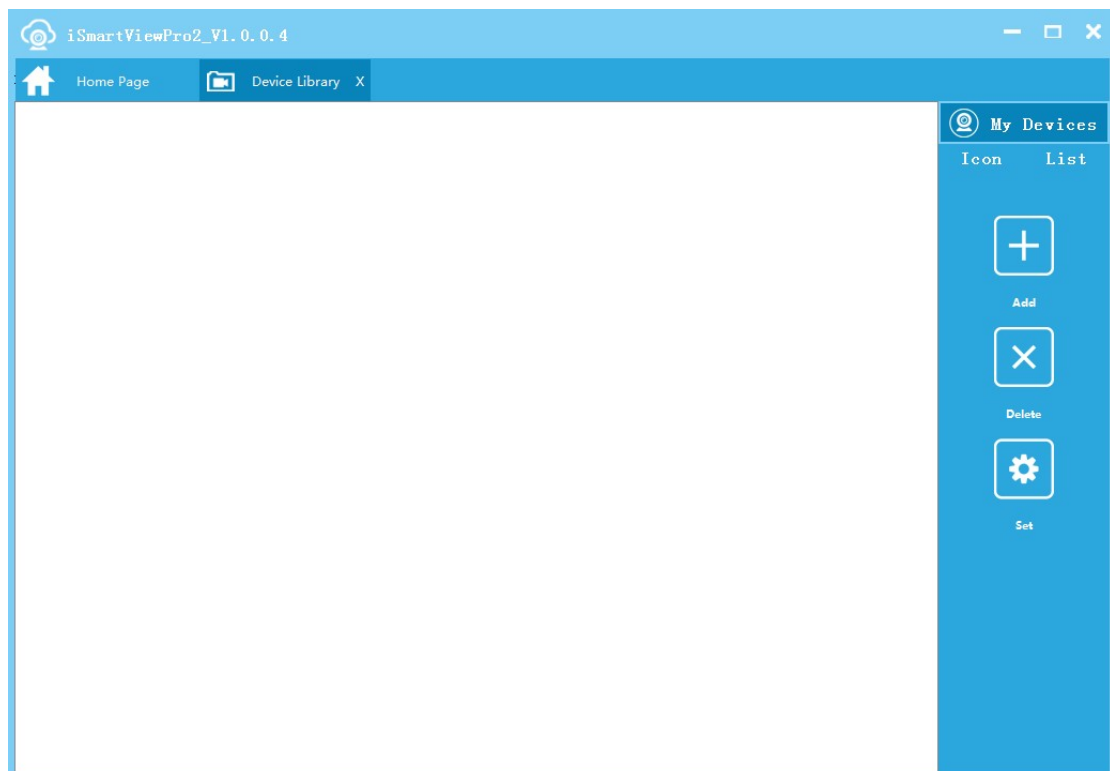




Figure 3

Add: click  to add camera, you can choice add manually or search to add in LAN;



Set: choice a camera and click  to access advance setting of it;


Delete: choice a camera and click  to delete it;

Device list:

Icon mode: show cameras as icon;

List mode: show cameras as list, can check numbers of local recording file and snapshot.

### Add Camera

Click  to go to add camera interface, you can add camera by manually or LAN search as Figure 4.

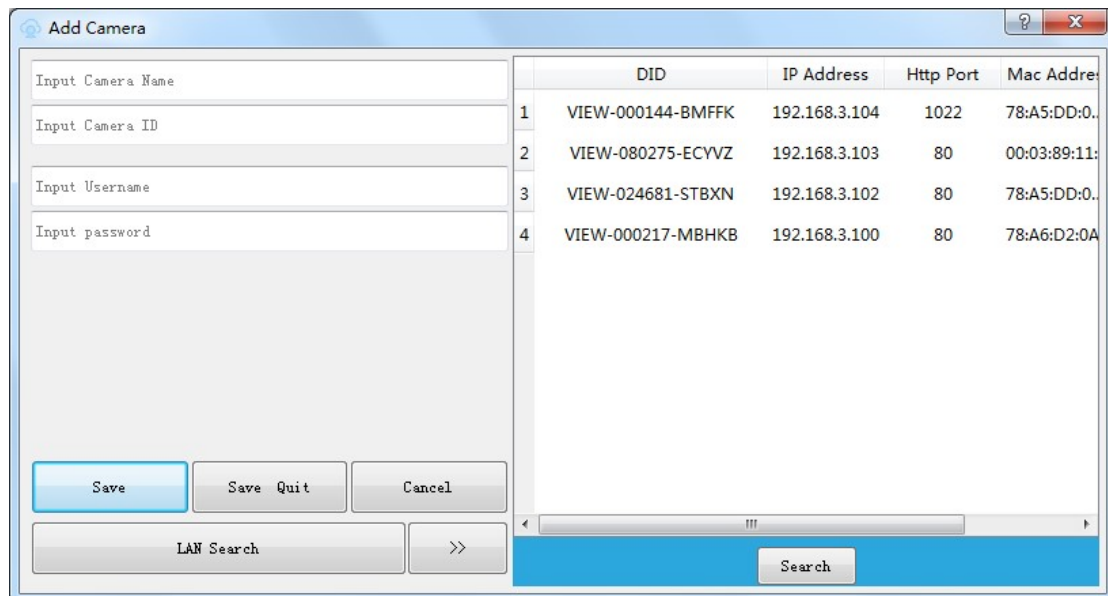


Figure 4

### Set up camera

#### Edit camera

You can modify the camera name, user name and password here as Figure 5.



Name: VIEW-000217-MBHKB

Device ID: VIEW-000217-MBHKB

Username: admin

Password: ●●●●●●

Save

Figure 5



## Device Information

You can get the information of product type, manufacturer, SD card status, firmware version and SmartP2P cloud platform information as Figure 6.

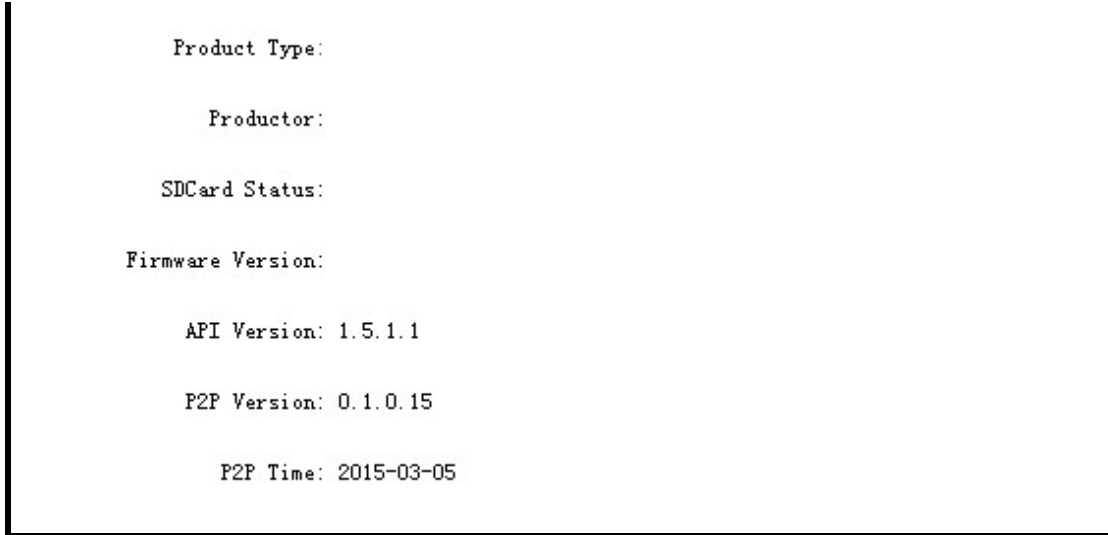


Figure 6

## User Setting

You can change user name and password of the camera at here as Figure 7.

Tips: the user authorization may be different for different series device, example for admin and visitor.



Figure 7



## Wi-Fi Setting

You can set up Wi-Fi connection of the camera at available LAN as Figure 8.

Wifi List:

	SSID	Encryption Type	Security Mode	Signal Strength
1	685	WPA2-PSK	None	100
2				
3				
4				
5				
6				

Current Wifi:

SSID:

Password:   Show Password

Note: Network can be used when you correctly set wifi

Figure 8

## Delete Camera

Choice a camera and click  to delete the camera as Figure 9.

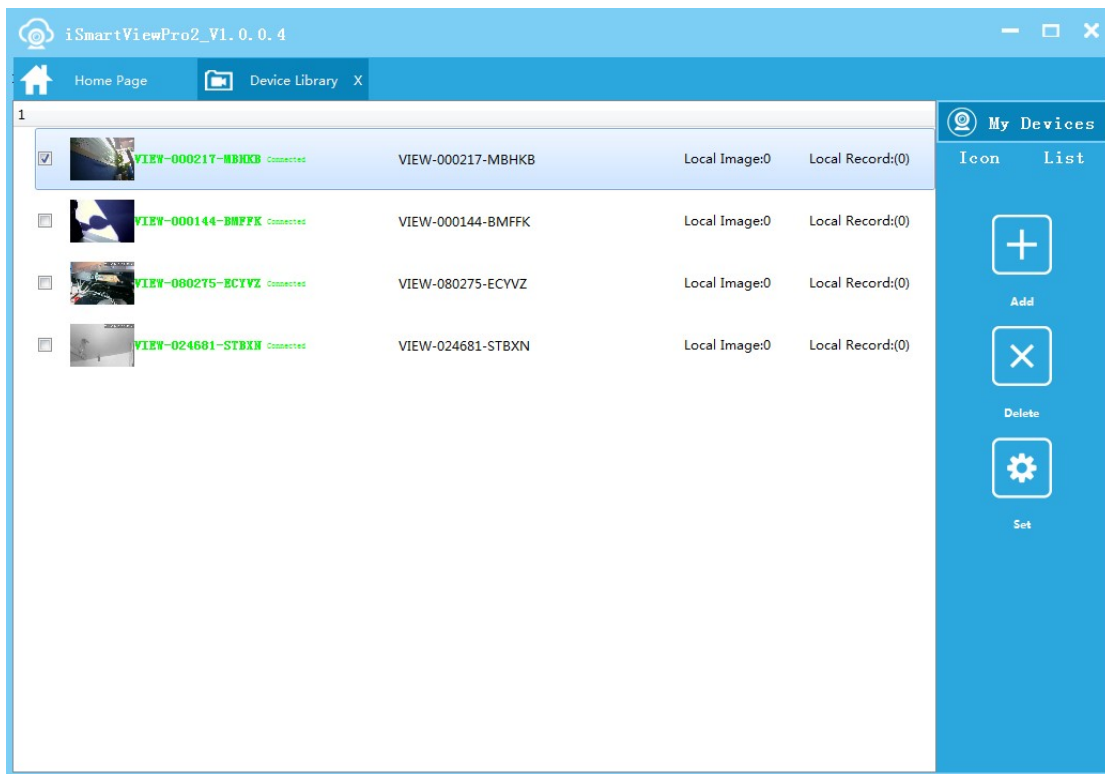


Figure 9



## Deice List

Mode 1: Icon mode, double click a camera to access Camera Setting as Figure 10.

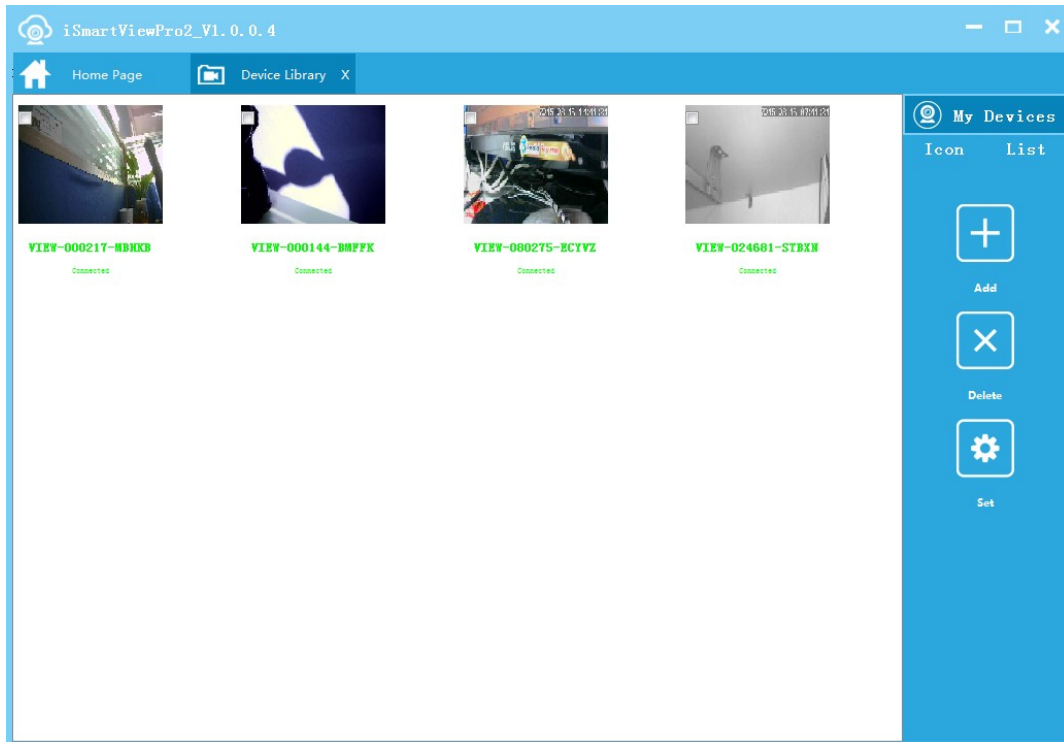


Figure 10

Mode 2: List mode, you can check numbers of local recording file and snapshot, and double click to access to **Camera Setting** as Figure 11.

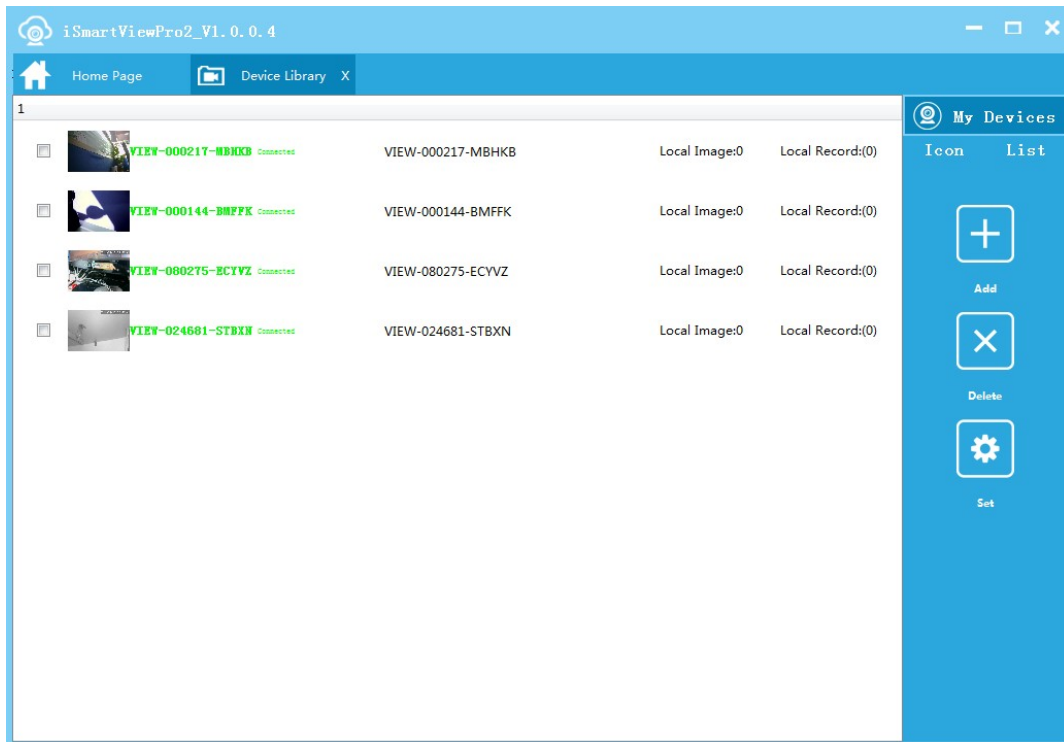


Figure 11

## Video Library

You can view multiple camera video at here as Figure 12.

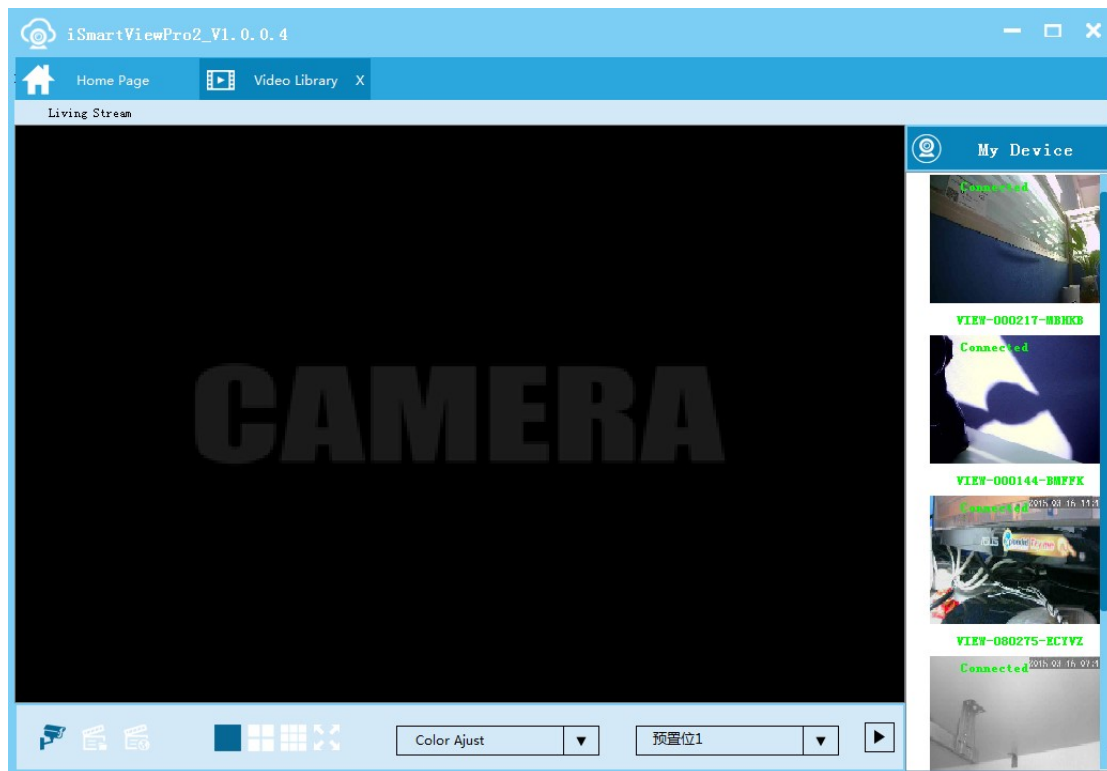







Figure 12


 Live video: you can view live video and perform these operation for control PTZ,monitor, talk,record, snapshot;

 Local Record: can check file list for local record and play back recording file;

 Remote record: can check record file for SD card and play back it remotely.



## Live Video

Click  Video Library to go into live video interface, choice connected camera and double click it to view video as Figure 13.

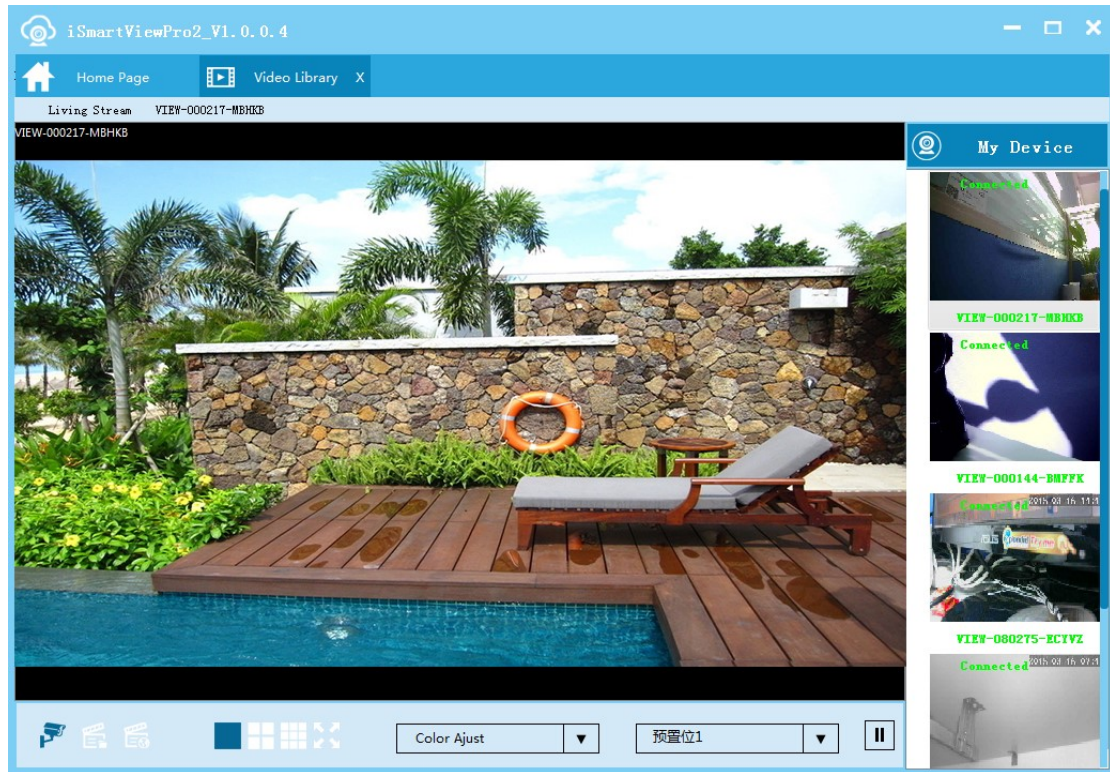
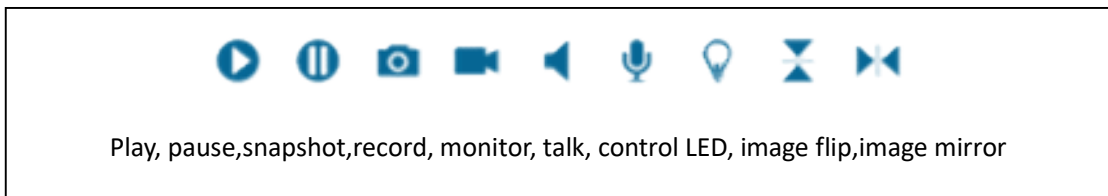


Figure 13



### Tips:

After setting a preset point, it will appear  before it as Figure 14.

After launching local record, it will appear  in left upper as Figure 15.



Figure 14

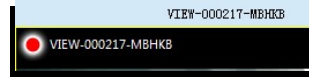


Figure 15

## Local Record

Choice connected camera and double click it to search local recording file automatically, it only support third party player to play recording file now.

Tips: Open the local record, you can find record by right click as Figure 16.

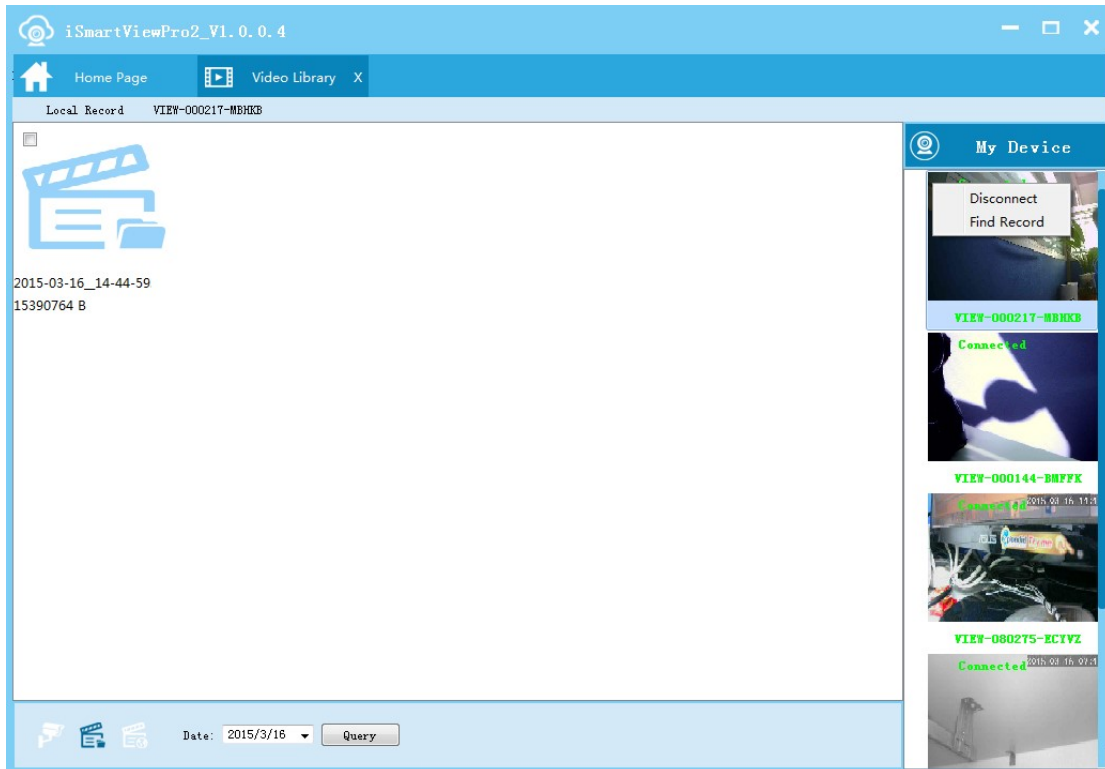


Figure 16



## Remote Record

Choice connected camera and double click it to search recording file in SD card automatically as Figure 17.

Tips: double click the record file you want to view, it will skip to playback interface automatically as Figure 18.

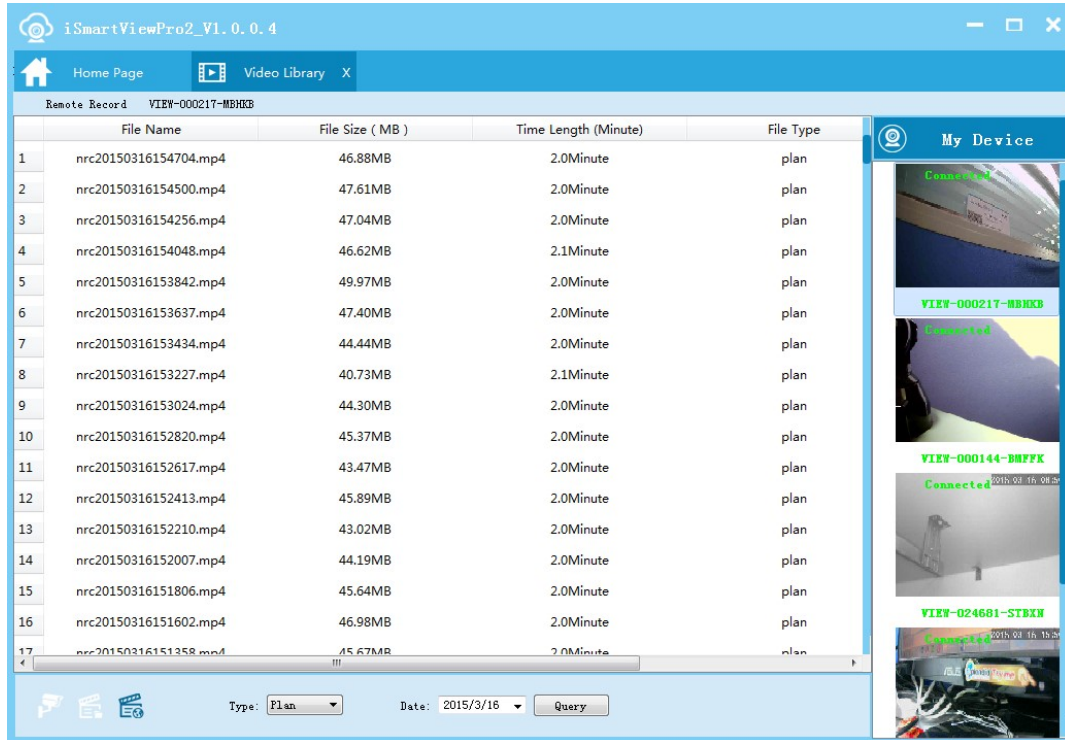


Figure 17

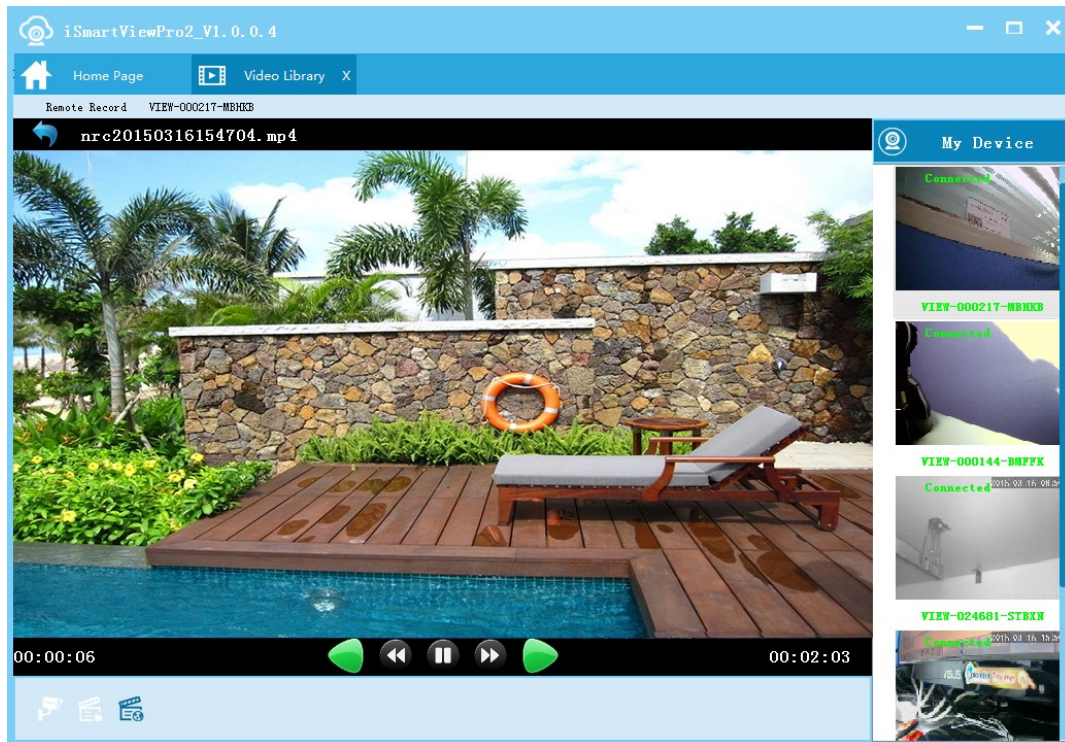


Figure 18

## System Setting(Local Setting)

You can set up the local recor, snapshot storage path, recording duration and change the system language as figure 19.

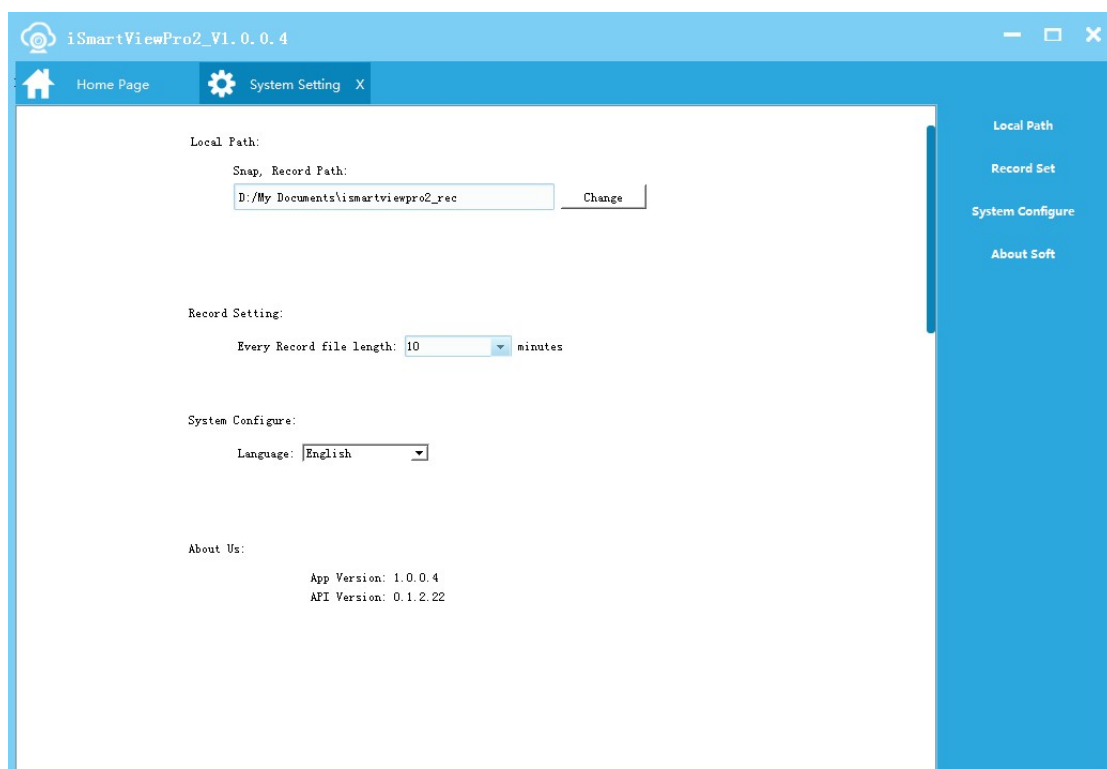




Figure 19

## Camera Log

You can check if the camera is online here, example for alarm information as figure 20.

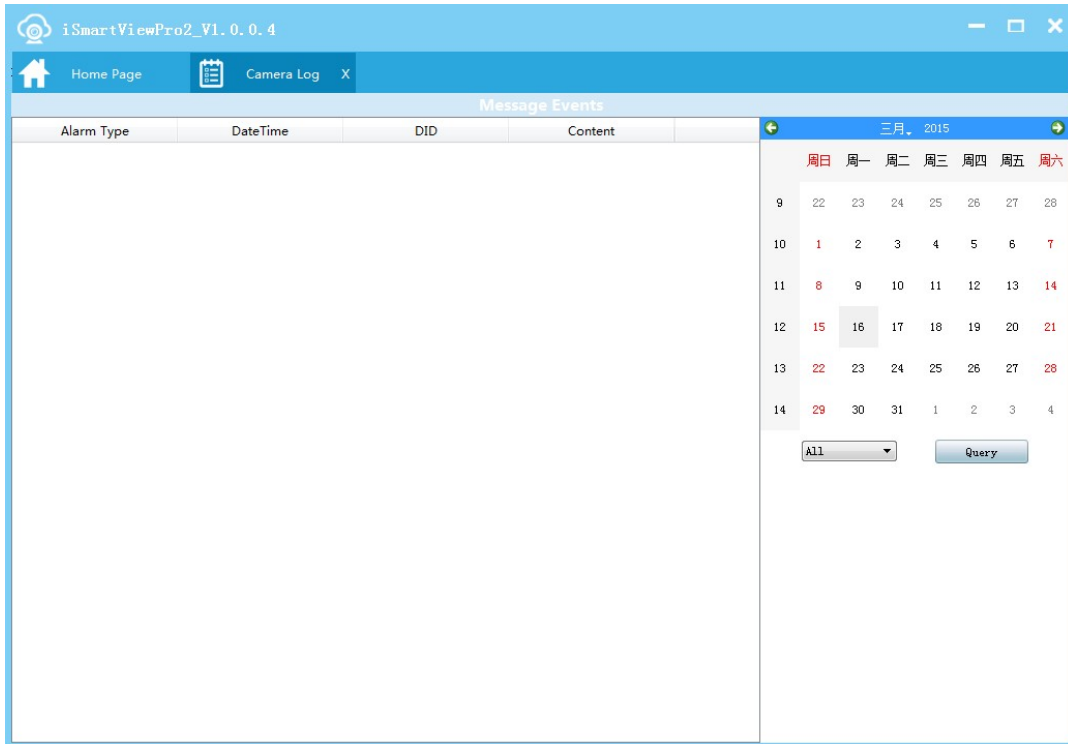


Figure 20