

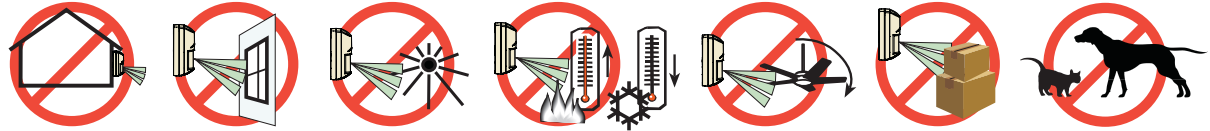
Blue Line Gen2  
PIR Motion Detector  
ISC-BPR2-W12



en Installation Guide

**Optional Brackets:**  
B328, B338, B335

2,2 m - 2,75 m  
(7.5 ft - 9 ft)  
Recommended:  
2,2m (7.5 ft)



**NOTE:**

This equipment has been tested and found to comply with the limits for a Class B digital device, pursuant to Part 15 of the FCC Rules. These limits are designed to provide reasonable protection against harmful interference in a residential installation. This equipment generates, uses and can radiate radio frequency energy and, if not installed and used in accordance with the instructions, may cause harmful interference to radio communications. However, there is no guarantee that interference will not occur in a particular installation. If this equipment does cause harmful interference to radio or television reception, which can be determined by turning the equipment off and on, the user is encouraged to try to correct the interference by one or more of the following measures:

- Reorient or relocate the receiving antenna.
- Increase the separation between the equipment and receiver.
- Connect the equipment into an outlet on a circuit different from that to which the receiver is connected.

**UL/C-UL**

Perform Walk Test at least once a year.  
Use only a Listed limited-power source.  
The Listed control unit or a Listed burglary power supply must provide 4 hours (40 mAh) of standby power.  
Install the unit in accordance with National Electrical Code NFPA 70 and Part 1 of the Canadian Electrical code CSA C22.1.

**CE** EN 50131-2-2 Grade 2  
EN 50130-5 Environmental Class II  
IP30 IK04 (EN 60529, EN 50102)

Ligue todas as cablagens apenas a um circuito de segurança de tensão extra baixa (SELV).

Alle Drähte sind ohne Ausnahme an Niederspannung anzuschließen.

**SELV**  
Connect all wiring to a safety extra-low voltage (SELV) circuit only.

**INCERT** B-509-0051/b

**NF A2P** Certificat NF A2P 2620200001  
2 boucliers NF324 - H58  
Autosurveillance à l'ouverture  
Immunité champ magnétique  
Testé sans masque de vision verticale  
[www.afnor.org](http://www.afnor.org)  
[www.cnpp.com](http://www.cnpp.com)

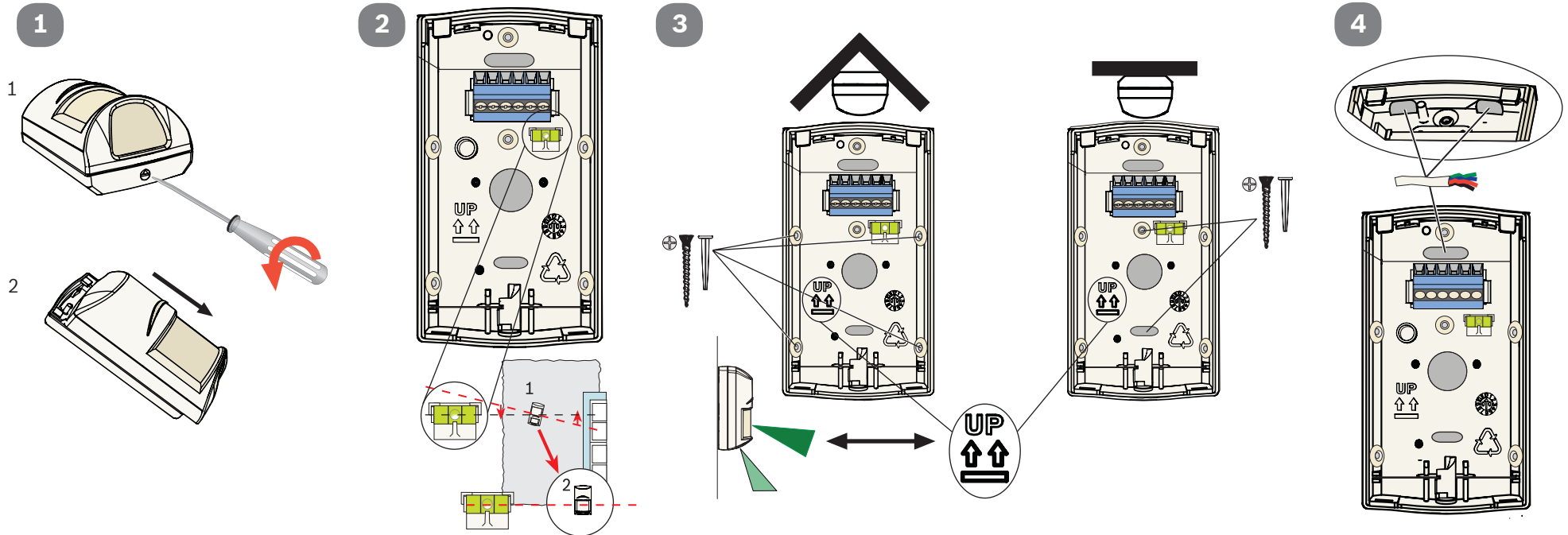
Sluit alle bedrading uitsluitend aan op een circuit met een extra lage veiligheidsspanning.  
Prenez soin de connecter tous les câbles à un circuit à très basse tension de sécurité (TBTS).  
Collegare tutti i cavi esclusivamente a un circuito SELV (circuito di sicurezza a bassissima tensione).  
Conecte el cableado únicamente a un circuito de seguridad para voltajes muy bajos (SELV).  
Changes or modifications not expressly approved by Bosch Security Systems, Inc. can void the user's authority to operate the equipment.

-30°C to +55°C  
(-20°F to +130°F)  
UL Listed installations,  
the temperature  
range is 0°C to +49°C  
(+32°F to +120°F)

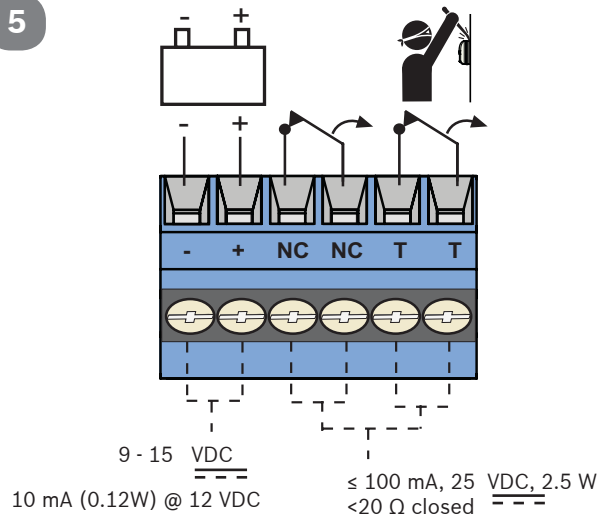
Pour les installations  
certifiées NFA2P,  
Température de  
fonctionnement  
-10°C à +55°C

0 - 95% Relative Humidity  
(0 - 85% UL/C-UL installations)

För svensk installationsanvisning se [www.boschsecurity.se](http://www.boschsecurity.se).

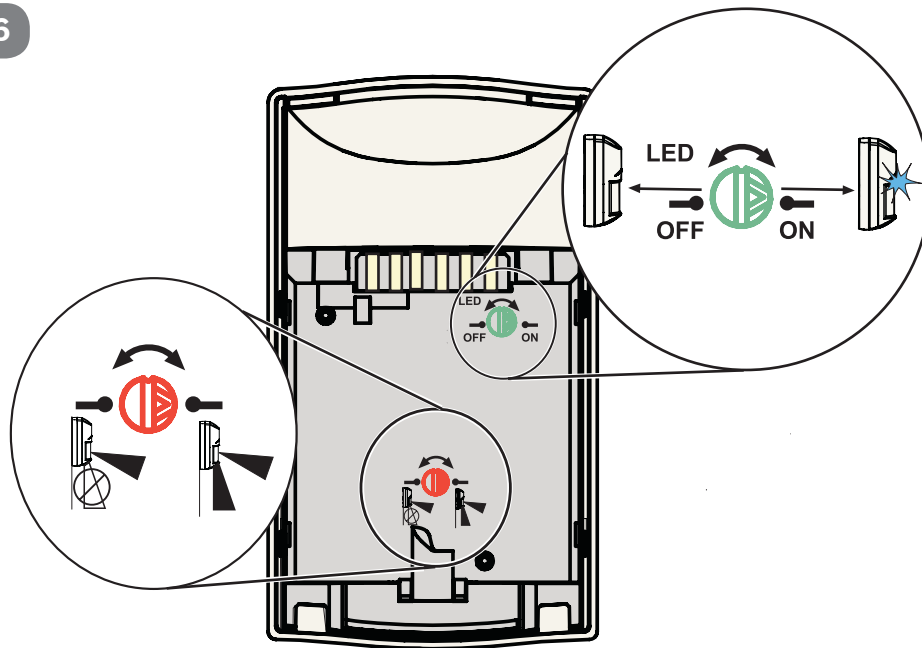


5

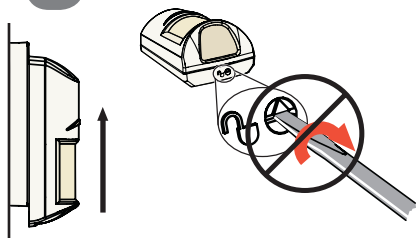


9-15 Vcc  
de 5 à 7 mA @ 12 Vcc en veille/  
en alarme, source limitée en  
puissance, ondulation  
résiduelle 1 V.

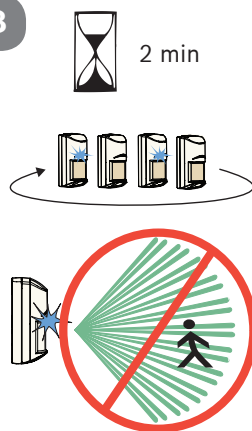
6



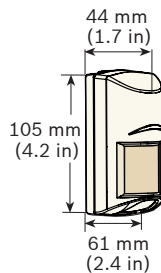
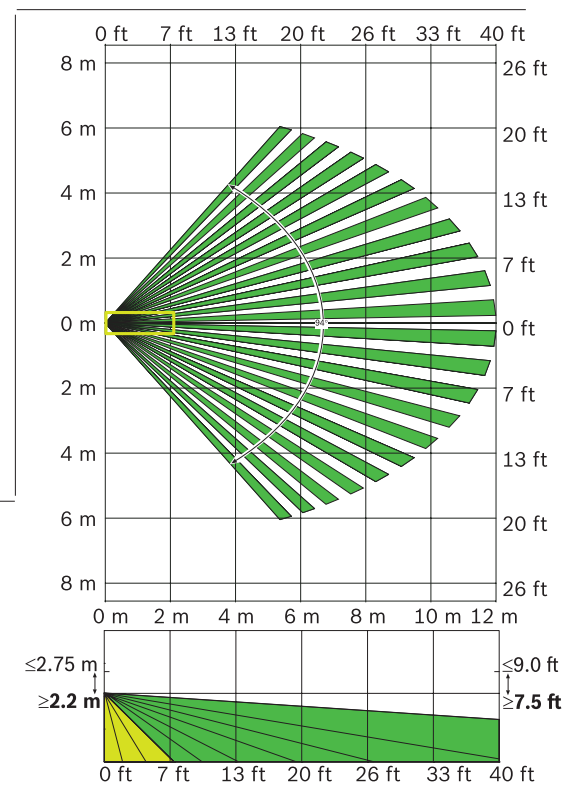
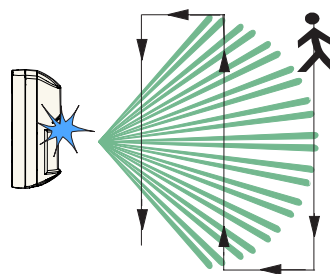
7



8



9



? → [www.boschsecurity.com](http://www.boschsecurity.com)

Reading Bosch Security Systems, Inc. Product Date Codes  
For Product Date Code information, refer to the  
Bosch Security Systems, Inc. Web site at:  
<http://www.boschsecurity.com/datecodes/>.

