

Operation Guide

For SecureCAMView

Jan, 2015






Rev1.0

Statement




If the user manual doesn't help you to resolve the problem, please contact us via our website for technical support.

Notice

1、 Installation Environment

-  Keep away from the places of high-temperature, heat sources and direct sunlight.
-  Keep away from water and if wet, cut off the power immediately.
-  Avoid using in a damp environment; the reference range for operation humidity is below 85%RH.
-  Avoid using in too hot or too cold environments, the reference range for operation temperature is $-10^{\circ}\text{C} \sim +50^{\circ}\text{C}$.
-  Please install it horizontally or wall mount, avoid strenuous vibration and do not place other items on top of the unit.

2、 Transport and Handling

-  Please handle the item with care.
-  Do not use in areas around condensation.
-  Please disconnect the item from the mains before moving.



Notice:

1. Be careful not to damage the camera or subject it to strong impacts or shocks.
2. Do not touch the optical components for the image sensor, such as the lens, if necessary, please place a clean and moistened cloth with alcohol and wipe the dirt gently; When not in use, please place the dust cover on to the item to protect the image sensor.
3. Do not aim the camera directly into the sun or at other intense light sources that could affect the image quality, this will also shorten the service life for the image sensor.
4. Keep away from laser when it is working, otherwise the image sensor can be damaged.
5. If the equipment is not working properly, please contact the store or the service centre, do not disassemble or modify the equipment in any way.

1.	SecureCAMView Summary.....	4
2.	Required computer.....	4
3.	Installing SecureCAMView.....	5
4.	SecureCAMView Application.....	5
5.	Device list menu.....	6
5.1.	Add device.....	6
5.1.1.	Search to add device in LAN.....	6
5.1.2.	Add device manually.....	7
5.2.	Edit Device.....	7
5.3.	Delete device.....	8
5.4.	Device right-click Menu.....	8
6.	View Video and video setting menu.....	9
6.1.	Play Video.....	9
6.2.	Audio&Video/Image parameters/PTZ control.....	10
7.	Local Menu.....	10
7.1.	System Setting.....	11
7.1.1.	Trigger alarm.....	11
7.1.2.	Play automatically after launching the software.....	11
7.1.3.	Default Record Plan.....	11
8.	Operation Log and Alarm Management.....	12
9.	Play back recording and inquire recording file.....	13

1. SecureCAMView Summary

SecureCAMView is a Cloud IP camera centralization management software provided by the manufacturer. It provides the central control of monitoring, video capture, record, alarm detection, etc for multiple IP cameras on LAN or WAN.

SecureCAMView can be running in Windows OS.

The SecureCAMView features:

- Support P2P camera connection;
- Support DDNS connection;
- Support international language switching;
- Support local scheduled recording;
- Support alarm recording and snapshot;
- Support monitoring and talking;
- Support image setting;
- Support PTZ setting;
- Customized change skin.

2. Required computer

For using the SecureCAMView your computer stably should meet the following configuration, recommend minimum computer configuration:

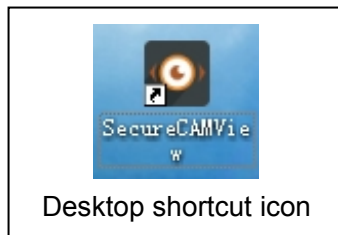
- CPU: Dual core CPU
- RAM: above 1G
- Hard Disk: above 500G
- OS: Windows XP or above
- Monitor resolution: ≥1024*768

3. Installing SecureCAMView

Obtain SecureCAMView installation software:

- Obtain the software from attached CD
- Download the software from our website

Please create desktop shortcut icon when installing the SecureCAMView.



4. SecureCAMView Application

Double click the SecureCAMView desktop shortcut icon to run the SecureCAMView, it shown as below.

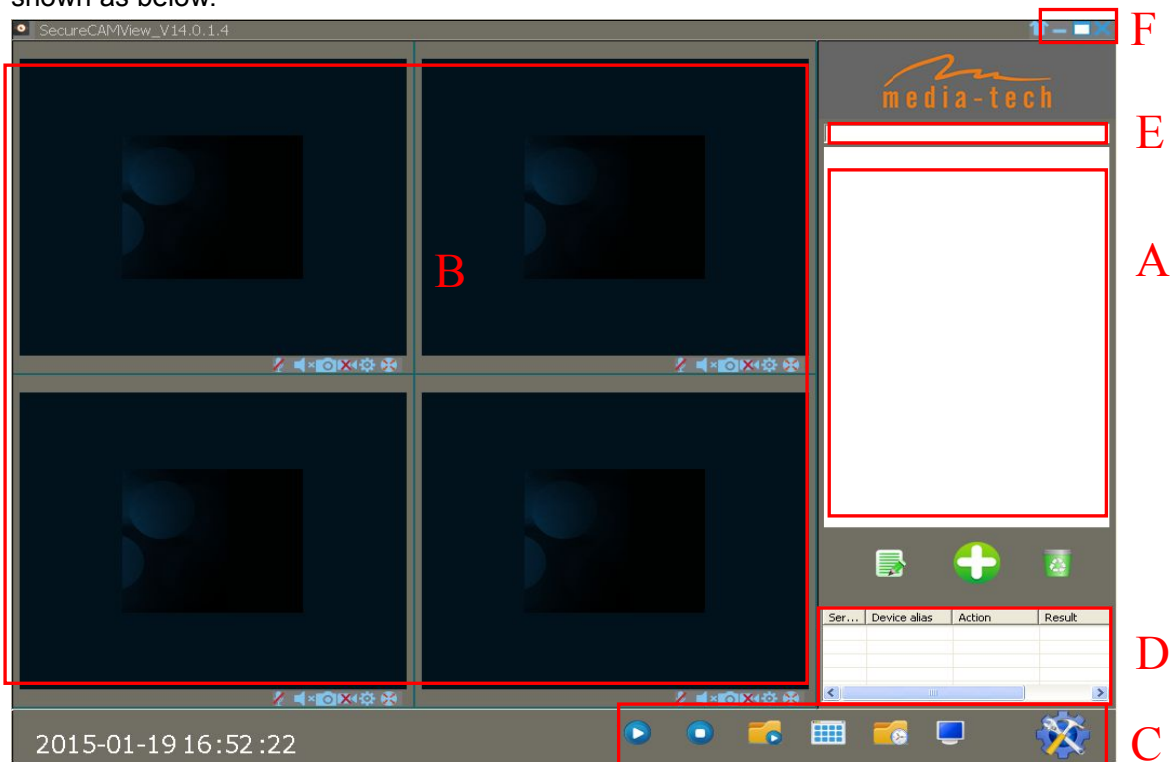


Figure 1

- A: Camera list area
- B: View video and video setup area
- C: Local Menu setting area
- D: Camera operation log
- E: Search bar
- F: 🗑️ System language switching functions etc

5. Device list menu

5.1. Add device

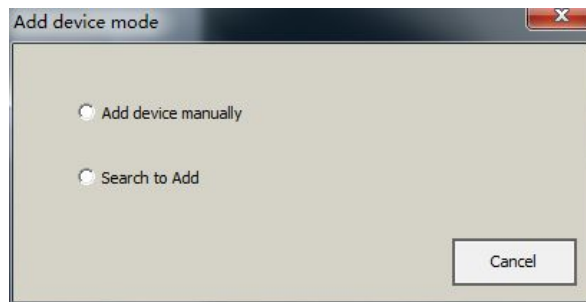
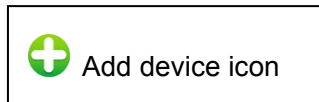


Figure 2

5.1.1. Search to add device in LAN

Select "Search to Add" to access search interface, and then select corresponding device type to search, fill in correct username and password in searched device and save as Figure 3.

Tips: The device will be displayed in device list after saving.

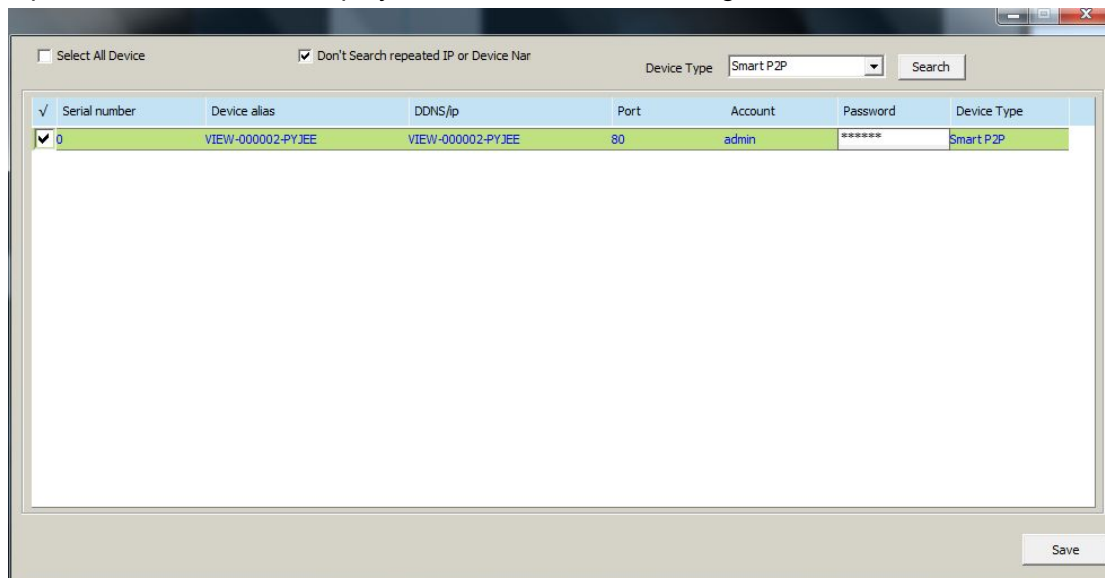


Figure 3

5.1.2. Add device manually

Select "Add device manually" to access add interface, the item marked * must be filled as

Figure 4

Tips: please select correct Device Type when you add camera.

The screenshot shows a dialog box titled "Edit device information". It contains several input fields and buttons. The "Device alias" field is filled with "VIEW-000002-PYJEE" and has a "Change" checkbox below it. The "Device Type" is a dropdown menu set to "Smart P2P". The "DDNS/IP" field is filled with "VIEW-000002-PYJEE". The "Port" field is empty. The "Account" field is filled with "admin". The "Password" field is filled with asterisks. There are three buttons: "Test", "Cancel", and "Save".

Figure 4

5.2. Edit Device



Select the camera added in device list, click Edit Device button to set up user management parameters as Figure 5.

The screenshot shows the same "Edit device information" dialog box as Figure 4, but with the "Port" field now containing the number "80". All other fields and buttons remain the same.

Figure 5

5.3. Delete device



Select the camera added in device list, click Delete Device button to delete the device.

5.4. Device right-click Menu

Select the camera added in device list, right click it, it will pop up Right-click Menu as Figure 6.

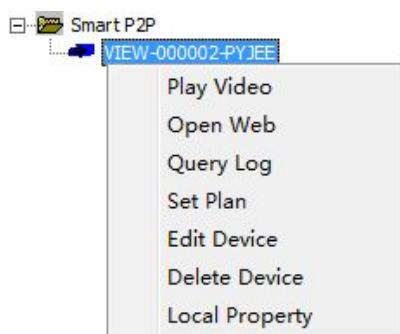


Figure 6

Query Log: query operation log and alarm log of the camera, same as section 8;

Set Plan: You can perform single camera recording plan after adding recording plan.(need to add “default record plan” in system setting, then you set up it, detail see section 7.1.3);

Edit Device: the function same as 5.2 Edit Device;

Local Property: view information of selected device as Figure 7



Figure 7

Tips: Right click any here, it will pop up a menu as Figure 8 when you don't select any camera, then you can use one key to perform all operation.

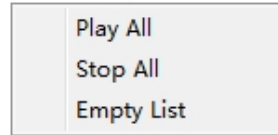


Figure 8

6. View Video and video setting menu

6.1. Play Video








Select the camera you want to play in device list, right click “Play Video” or double click to play the video as Figure 9.



Figure 9

6.2. Audio&Video/Image parameters/PTZ control

You can perform monitoring, talking, snapshot, record, image parameter setting and PTZ control etc when viewing video.

-  Talking button;
-  monitoring button;
-  Snapshot button;
-  Record and status display (two mode:  indicate record manually,  indicate scheduled record);
-  Image Parameters Setting button, the setting of image parameters may be different due to camera model or series as Figure 10.

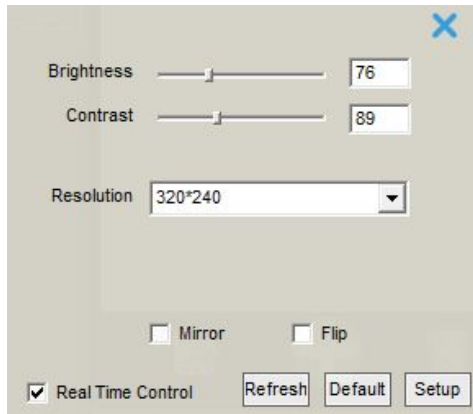
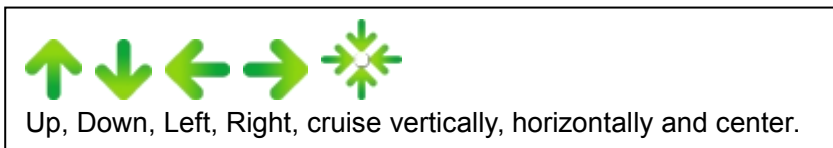
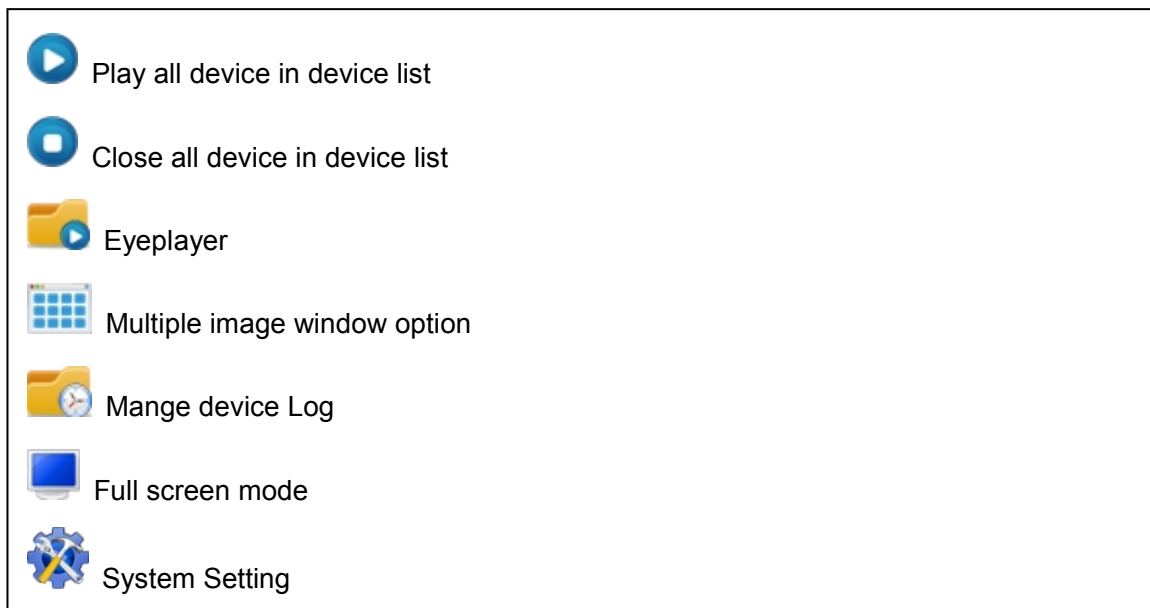


Figure 10

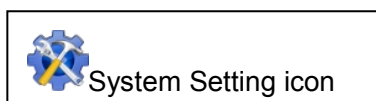
 PTZ control button



7. Local Menu



7.1. System Setting



You can set up snapshot, alarm recording, recording save path, play automatically after reboot and recording plan here as Figure 11.

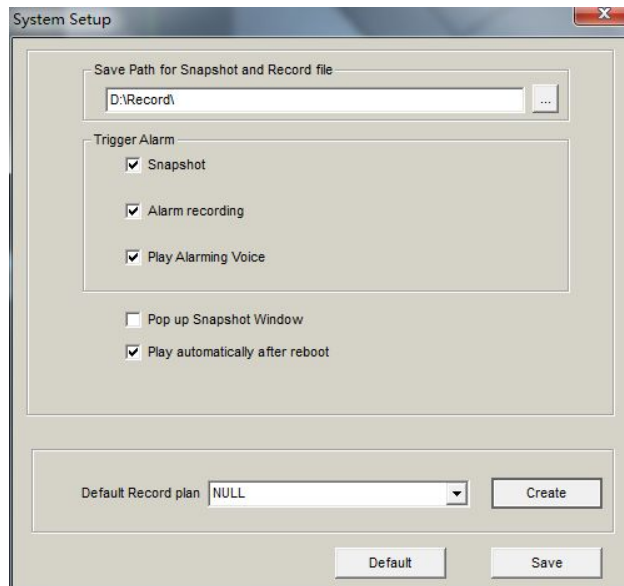


Figure 11

7.1.1. Trigger alarm



It supports snapshot, alarm recording and alarm voice prompt

Tips: You need to set up motion detection and the trigger alarm of camera website, so it will be performed trigger alarm.

7.1.2. Play automatically after launching the software

Ticked “Play automatically after reboot”, it will connect automatically and play the cameras in device list after reboot the software.

7.1.3. Default Record Plan

You need to create recording plan to set up it when you use local record plan; record status indicate as  record manually,  record plan, shown as Figure 12.

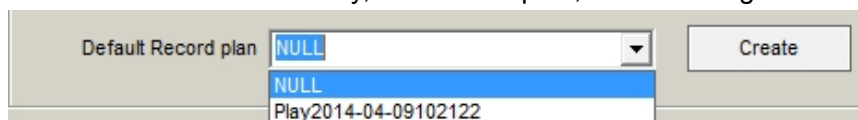


Figure 12

Tips: You need to select record property when creating record plan, consider if cover the recording or stop recording after the space is full, shown as Figure 13

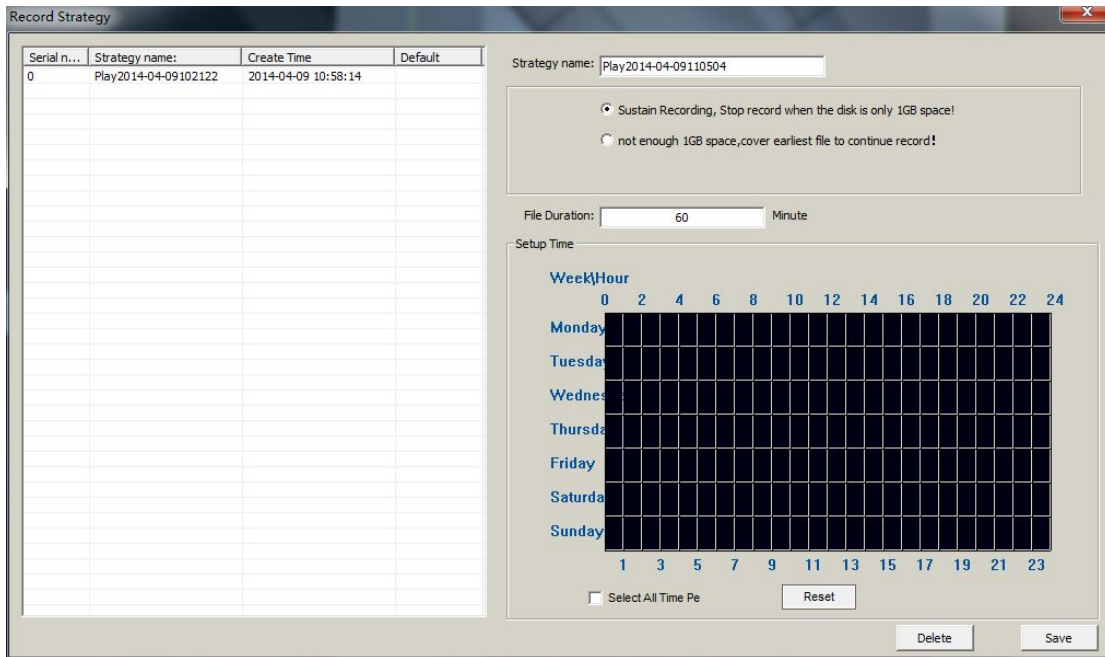
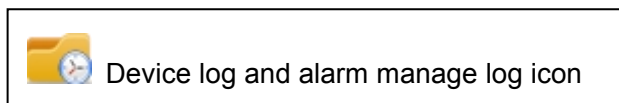


Figure 13

8. Operation Log and Alarm Management



You can query work log and alarm log for a camera, example for, what time is it played video, what time is it closed video as Figure 14.

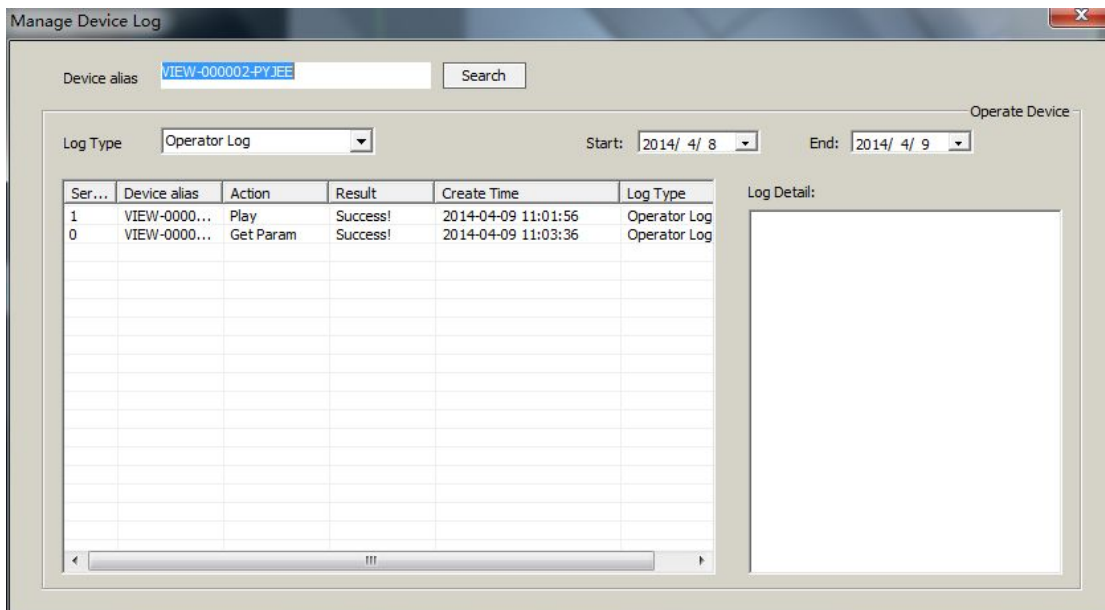
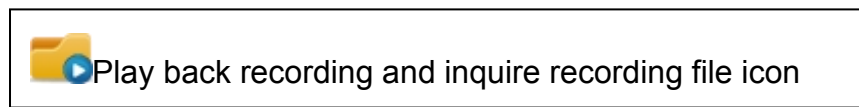


Figure 14

9. Play back recording and inquire recording file



Launch Eyeplayer, the user can check recording file of each camera by recording path as Figure 15

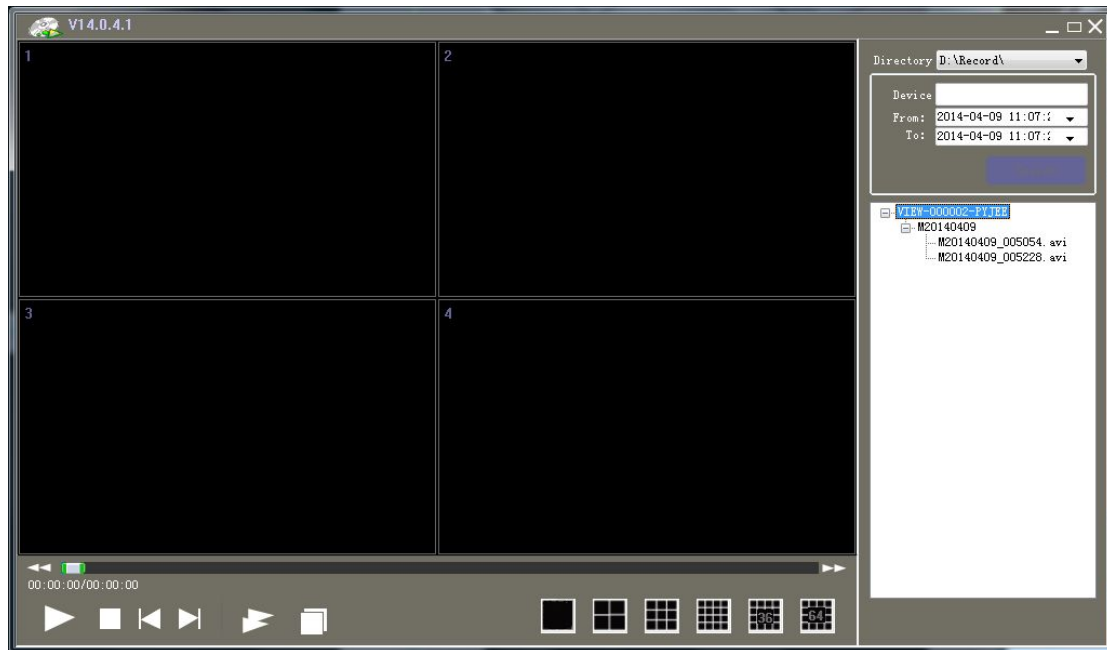


Figure 15