

INDOOR SECURECAM HD

MT4051



User Manual

| | |
|---|-----------|
| Notice | 3 |
| Transport and Handling..... | 3 |
| Product introduction..... | 4 |
| Product summary..... | 4 |
| Main features | 4 |
| Package for typical production | 4 |
| Overview | 5 |
| The camera features | 5 |
| Installation and Operation Guide | 6 |
| View video by mobile phone software..... | 6 |
| View video by wired connection in LAN | 6 |
| 1. Status bar..... | 7 |
| 2. Choose video stream..... | 8 |
| 3. PTZ control..... | 8 |
| 4. Snap /record / SD card/playback | 8 |
| View video by WiFi connection in LAN | 8 |
| View video in internet..... | 9 |
| View Video by PC client software | 10 |
| View Video by other way | 10 |
| Other Web Browser..... | 10 |
| Other common software | 10 |
| All settings | 11 |
| Video setting..... | 11 |
| Video parameters..... | 11 |
| Audio parameters | 11 |
| Image parameters..... | 12 |

| | |
|--------------------------------|----|
| Web setting | 12 |
| Basic web setting | 12 |
| WIFI setting..... | 12 |
| WAN access setting..... | 12 |
| ONVIF setting..... | 13 |
| Alarm setting | 13 |
| External Alarm Input | 13 |
| Alarm mode setting | 13 |
| Motion Detection Setting | 14 |
| Alarm time setting | 14 |
| Advanced setting | 14 |
| User management | 14 |
| Auto Capture Setting..... | 15 |
| Timer recording | 15 |
| E-mail Setting | 15 |
| FTP setting..... | 16 |
| Multiple settings..... | 16 |
| System setting..... | 16 |
| Device information | 16 |
| Date and time setting | 17 |
| Initialize setting..... | 17 |
| System Log | 17 |

Notice

- Keep away from the places for high-temperature, heat source and direct sunlight;
- Keep away from water and when get wet, cut off the power immediately.
- Avoid using at damp environment; the reference range for operation humidity is below 85%RH.
- Operation temperature is $-10^{\circ} \sim +50^{\circ}$
- Please install it horizontally or wall mount, avoid strenuous vibration and do not place other items on top of the unit.

Transport and Handling

- Please handle the item with care.
- Do not use in areas around condensation.
- Please disconnect the item from the mains before moving.



1. Be careful not to damage the camera or subject it to strong impacts or shocks.
2. Do not touch the optical components for the image sensor, such as the lens, if necessary, please place a clean and moistened cloth with alcohol and wipe the dirt gently; When not in use, please place the dust cover on to the item to protect the image sensor.

3. Do not aim the camera directly into the sun or at other intense light sources that could affect the image quality, this will also shorten the service life for the image sensor.
4. Keep away from laser when it is working, otherwise the image sensor can be damaged.
5. If the equipment is not working properly, please contact the store or the service centre, do not disassemble or modify the equipment in any way.

Product introduction

Product summary

Thank you for choosing this high definition SmartP2P IP Camera, the IP Camera combines a high definition digital video camera with network connectivity and a powerful web server to bring high definition video to your desktop from anywhere on your local network or over the Internet. It is very suitable for family, shops, office and so on.

Main features

- Support Plug and Play function, view video via free iSmartviewPro mobile phone or PC client software.
- Support 3 kinds of H.264 video stream and 1 way MJPEG video stream simultaneously, suitable for Local, Internet and Cross-platform view;
- Support resolution for 1280x720/640x360/320x180;
- Support 4 ways view in a video stream;
- Support two-way intercom function, and G.711 and G.726 audio encoding;
- Support 802.11b/g protocol, build-in WiFi module to perform wireless monitoring;
- Support up to 32GB SD/TF card for storing the alarm video and pictures, timing snapshot and recording;
- Built-in web server, use one port to send all the data, users can facilitates network setting;
- Support ONVIF and RTSP protocol, easy to integrate it to NVR or large client software;
- Support WPS/QSS function;

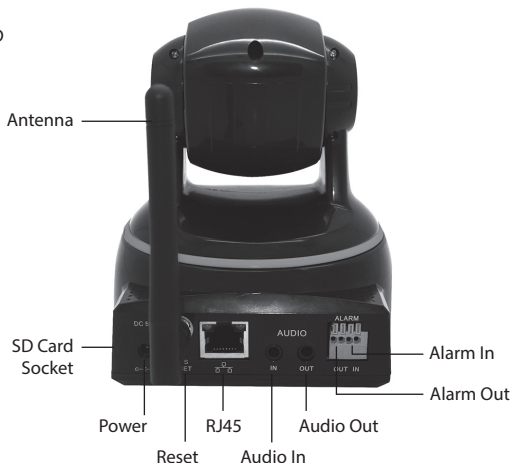
- Support multi-languages web interface, support 1/4/9 split screen to perform several view at same time;
- Manufacturer puts a label of DDNS at the bottom of each IP Camera. When IP Camera is connected to the internet, this URL can be used to visit the device;

Package for typical production

- Power adaptor 5V,
- CD,
- Cable,
- Bracket L,
- Antenna.

Notice: Please check carefully if all listed items are included in the package, if anything missing, please contact your vendor.

Overview



The camera features

- Max. resolution is 720P, support two way intercom, build in MIC;
- Build in WIFI module, support 802.11b/g, easy for connecting wireless router;
- Support rotate 350° horizontally and 100° vertically;
- Build in IR-CUT, 3.6mm lens;
- 8 pcs IR LED, up to 5 meter night vision;
- Alarm in/out for external alarm system connection;
- SD card socket for recording storage;

- Work status LED indicate:
Flash normally (1 time per second) means the device runs normally, it means the camera was connected to wired network
Always on, it means the camera is searching WPS
Flash very fast (3 times per second) it means the camera was connected to wireless network.

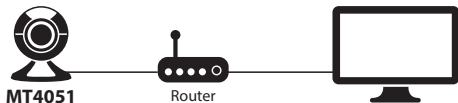
Installation and Operation Guide

View video by mobile phone software

You need to download and install "iSmartviewPro" mobile phone client software from attached CD, and then scan QR code on the camera body to add camera for viewing video, for detail, please refer to application guide.

View video by wired connection in LAN

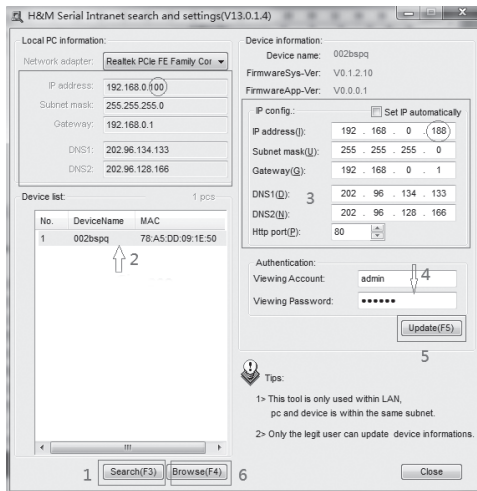
Power on the IP camera (please check carefully the voltage of power adaptor, don't insert incorrect power, otherwise it will be damaged), connect IP camera to router by network cable and connect computer to the same router.



Insert attached CD to computer driver, double click "H&MSearch_en.exe" in the CD, will pop up the interface, please operate as the following steps:

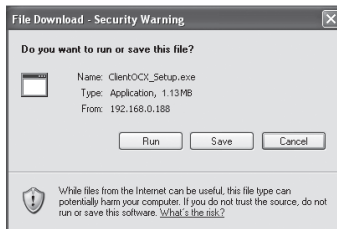
1. Click "Search" (Please make sure your firewall will not block up the item to be searched)
2. Choose a camera;
3. Change the IP address of the IP camera according to the information in the red frame on the left. The numbers in the red circle should not be the same. The Http port should be a number between 80~65535;

4. Enter user name and password for the device, the default is "admin" and "123456";
5. Click "update";
6. After updating successfully, click "Search (F3)", choose the device again and click "Browse (F4)". Then you can run the web browser, enter user name and password and login IP camera to view the video (please use IE browser at first time).





Notice: Need to download ActiveX. Click “download ActiveX (when first use)” click ‘run’ will download and install the ActiveX automatically.



Tips: You can hold on reset button on the camera for 10 seconds to restore factory default if you forget user name and password, or not sure the device parameters.

Click “Video View” to access video interface as below.



1. Status bar



1. Display connection status;
2. Display record status: if click “Record”, it will show “REC” which stands for recording; click record button again, it will stop;
3. Zoom out, zoom in and restore digital zoom;
4. Set saving file path: set the location for recording and capturing file storage;
5. Talk button: Click this button to hear what the person at the side of computer talks. Click it again, it will stop playing;
6. Audio monitor button: Click this button to hear what people talking about at the side of IP Cameras,

Note! In this window file location path are defined on local PC computer, in this window you can manually start/stop recording or make snapshot. For automatic surveillance function like motion detection go to "Settings" and define SD card or FTP server as file storage.

2. Choose video stream

You can choose primary stream or second stream, third stream to view the video. Recommend to view by primary stream in LAN, by second stream in WAN and by third stream in mobile phone. This option is good for preview previously defined quality stream in "Settings".

You can view the video by four, nine pictures in same screen, but need to set the camera in multiple setting.

3. PTZ control

If the camera supports PTZ function, you can click up, down, left, right arrow to control the camera moving, click [● ■] button to center and stop the camera. When you set camera to a preset position, and then click [SET], after the camera is changed to other direction, click [CALL] can move the camera to the position you have set.

4. Snap /record / SD card / playback

- Click "Snap" button, to save the picture to the specified path.
- Click "Record" button to start recording. Click again to stop recording.
- Click "Check TF/SD card" can browse the files in the SD card (If the SD card already inside the camera), you can select file to download it;

- Click "Playback" button, it will show a player which can play the record video. For these buttons [▶ ■ ▲ - +] means: play; stop; open video file; slow play; quick play.

View video by WiFi connection in LAN

After finishing the wired connection you can connect the camera by WiFi.

Login camera in wired connection and enter wifi setting, and then operate as the following step.

Enable Wireless : ☒ On ☐ Off

1. open SSID : owen 2. search Search

Security Mode : WPA-PSK

3. choose your router WPA Algorithm : TKIP 4. Input password of the wireless router

Key : *****

Re-Type Key : *****

5. Then check if the wireless setting is successful

Check Wireless Set : ☒ Check

| Join | RSSI | SSID | Encryption mode | Authentication mode | Connection mode | Channel |
|------|------|----------------|-----------------|---------------------|-----------------|---------|
| OK | -77 | song | AES | WPA2-PSK | Intra | 1 |
| OK | -75 | rb-lew2 | AES | WPA2-PSK | Intra | 3 |
| OK | -47 | owen | AES | WPA-PSK | Intra | 6 |
| OK | -77 | TP-LINK_283362 | NONE | OPEN | Intra | 13 |

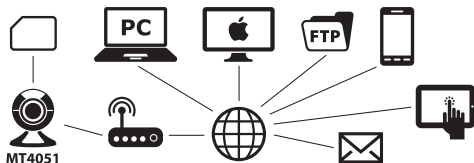
Select 'On' and click 'Search', and then select wireless router in pop-up menu, click 'OK' and enter password if needed, click 'apply' to save the wireless settings. And you can click 'check' to check if the wireless setting is successful. After setting successfully, please pull out network cable and reboot the camera to use the wireless connection to view video.

Because the camera supports WPS/QSS, so you can set wireless by simple way as below.

1. Please confirm if the router connected to camera supports WPS/QSS (you can check user manual of the router or get the support from router factory);
2. Press WPS/QSS button on the router, it will launch the function.
3. Press and hold on reset button for 2~5 seconds after it ran normally (not need connect cable), it will launch the WPS/QSS function, then match the setting with the router, the status LED always on when it was matching, and it will flash after matching successfully.
4. Unplug power adaptor and reboot the camera, then you can use the wireless connect function.

Notice: The camera will automatically stop the function when the matching is unsuccessful after continuing 50 seconds. Due to difference in the working of the routers, we don't guarantee that WPS function can be used successfully.

View video in internet



You should connect your internal network to the internet first and configure port forwarding, please refer to your router manual for further details.

For example: operation step of port forwarding.

The screenshots show the Netgear Smart Wizard interface for configuring port forwarding. The first screenshot shows the 'Basic Settings' page where 'Port Forwarding / Port Triggering' is selected. The second screenshot shows the 'Ports - Custom Services' page where a new service is being added. The service name is 'Input IP camera port #', the service type is 'TCP/UDP', the starting port is '9191', the ending port is '9191', and the server IP address is '192.168.1.158'. The 'Apply' button is highlighted.

1. Please go to the setting interface of Router, and choose "Port Forwarding";
2. Choose "Add custom Service";
3. Input IP camera http port;
4. Input LAN IP Address of the camera, click "Apply"

After finishing the port forwarding, you can use WAN IP address of router and http port of camera to visit the camera by remote computer.

Notice: because the routers are different, so the interface and setting method of router are also different, how to do the port forwarding for various routers, please refer to the user manual of your router or consult with router manufacturer.

View Video by PC client software

You need to install “iSmartviewPro” PC client software from attached CD, and then add camera to view live video. For detail, please see the “User manual for iSmartViewPro”.

View Video by other way

Other Web Browser

In the Windows OS, for using browser with IE kernel, user must download the ActiveX. While for Safari and Firefox browsers, please Download “QuickTime” plug-in and install it to access the IP camera. After installation, please run the QuickTime program to access the QuickTime Preferences dialog box from Edit Menu, example as below. Click “Advanced”, select “custom.” in the Transport Setup. It pops up the Streaming Transport dialog box. Please select “HTTP” for transport protocol and “80” as port ID, click “ok”, and then return to Transport Setup to change “Custom..” to “Auto”. Finally, click “ok” at the bottom. After finishing these settings, run the Firefox or Safari browser to view the video.

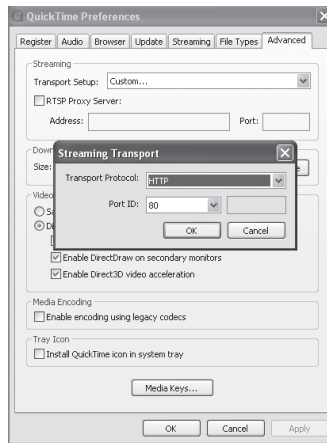
In Mac computer, the Quicktime is installed by default, so the user simply accesses setting tool folder at application

folder and run the command program, enter command by command line mode:

qtdefaults write TransportSettings HTTP 80

And then run the Safari browser to view the video.

Note: Please select the G.711 audio code format for audio playback in Quicktime plug-in.



Other common software

As the device supports RTSP protocol, you can use VLC player to play IP Camera video. It is compatible with VLC

1.1.12 version or above. Please use below URL to visit:
 rtsp://ip:port/11 (View the video by first stream)
 rtsp://ip:port/12 (View video by second stream)
 rtsp://ip:port/13 (View video by third stream)

The port is RTSP port.

All settings

Video setting

In the setting, you can adjust the video, audio and image setting according to actual environment for getting best effect.

Video parameters

Power Line Frequency: 50Hz
 If pictures have ripple, can adjust it to eliminate ripple here

First stream
 Resolution: 1280x720
 Bit Rate: 4096 kbps
 The bigger the bit rate, the video is more fluent, take up more bandwidth.
 Frame Rate: 25 fps

Second stream
 Resolution: 640x360
 Bit Rate: 1024 kbps
 Frame Rate: 25 fps
 The higher the frame rate, the more smooth image.

Third stream
 Resolution: 320x180
 Bit Rate: 256 kbps
 Frame Rate: 25 fps

JPEG Stream
 Resolution: 320x180

Overlay Options
 Time Stamp: ☒ On ☐ Off
 They will be displayed at monitoring image when selected 'on'
 Camera Name: ☒ On ☐ Off
 Name: IP Camera
 Don't input special characters like: ~!@#\$%^&*()_+={}|~!@#\$%^&*()_+={}|

Apply Cancel

JPEG stream is for some views by non windows platform, for example, click 'mobile view' in first page, it will transmit JPEG stream actually.

Audio parameters

Audio Options

Input Volume: 65 (1-100)
 Output Volume: 45 (1-100)

First stream
 Audio Capture: ☒ On ☐ Off
 Audio Type: G.711
 G.711 sound quality is good but takes up more bandwidth.

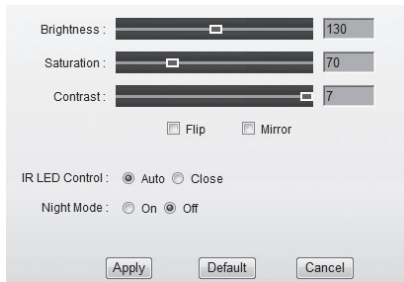
Second stream
 Audio Capture: ☒ On ☐ Off
 Audio Type: G.726
 G.726 sound quality is worse but takes up less bandwidth.

Third stream
 Audio Capture: ☒ On ☐ Off
 Audio Type: G.726

Apply Cancel

The camera supports G.711 and G.726 audio encoding format. The sound of the G.711 is better, but it occupies more bandwidth. If you click "On" of the audio capture, so it will transmit audio in corresponding video stream. Please open the audio here, should you hear the sound when clicking audio play button.

Image parameters



Brightness : 130

Saturation : 70

Contrast : 7

☐ Flip ☐ Mirror

IR LED Control : ☒ Auto ☐ Close

Night Mode : ☐ On ☒ Off

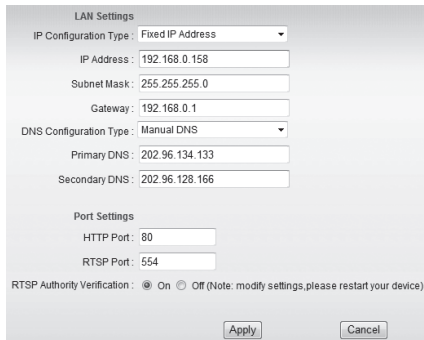
Apply Default Cancel

You can select “close” to disable IR LED when you don’t need it. At night mode, it will cut frame rate automatically to enhance night vision at night when you select “on”.

Web setting

Basic web setting

The cameras support RTSP protocol, if select “on” of “RTSP authority verification”, you need to enter user name and password when invoke video by RTSP protocol.



LAN Settings

IP Configuration Type : Fixed IP Address

IP Address : 192.168.0.158

Subnet Mask : 255.255.255.0

Gateway : 192.168.0.1

DNS Configuration Type : Manual DNS

Primary DNS : 202.96.134.133

Secondary DNS : 202.96.128.166

Port Settings

HTTP Port : 80

RTSP Port : 554

RTSP Authority Verification : ☒ On ☐ Off (Note: modify settings, please restart your device)

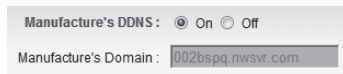
Apply Cancel

WIFI setting

Please refer to chapter “View video by WiFi connection in LAN”.

WAN access setting

In chapter “View video by WiFi connection in LAN”, you have known how to do port forwarding. After the success of the port forwarding, you can also visit camera by DDNS. The manufacturer has established a DDNS system, and allotted a DDNS to every device, the user can view it from remote PC.



Manufacture's DDNS : ☒ On ☐ Off

Manufacture's Domain : 002bspq.nwsvr.com

User can also use third party DDNS, such as www.dyndns.com. User applies a free domain name from this website and fills the info into below blanks and saves the settings. Then the domain name can be used.

Third Party DDNS : ☒ On ☐ Off

Domain Server :

Username :

Password :

Your Domain :

Notice: Using the third party DDNS, if the http port is not 80, the port number should be adding to the domain name with colon. Example: http://mydomain.dyndns.org:81.

ONVIF setting

ONVIF : ☒ On ☐ Off

Port :

Authority Verification : ☐ On ☒ Off

The camera supports ONVIF protocol, so it can be interconnected with other factory camera with ONVIF.

Tips: The device supports ONVIF 2.0.1 at present.

Alarm setting

External Alarm Input

☒ External Alarm Detection

Detection Mode : ☒ Open ☐ Close

Choose "open" or "close" according to the type of the external alarm detector

The camera should have external alarm input port for enable this functions. Connect external alarm detector to the input port, the detector will output switching signal when it detects any abnormal, input port of the camera will detect the level change, so it will detect the alarm, therefore the detector should be switching sensor (same as switch) .

Alarm mode setting

After camera detects any change, it will alarm as several mode.

☒ Save Picture on the SD Card

☒ Save Video on the SD Card

☒ Save Picture on the FTP Server

☒ Save Video on the FTP Server

After trigger alarm, the device choose various storage ways

FTP Setting → Built a FTP server

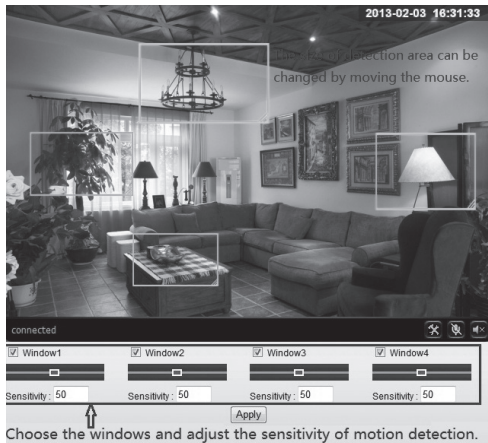
☒ Relay Out

Fill in your own mail address, and the alarm pictures will be sent and stored in your mail box

5 Seconds → Open external alarm time

Email Setting

Motion Detection Setting

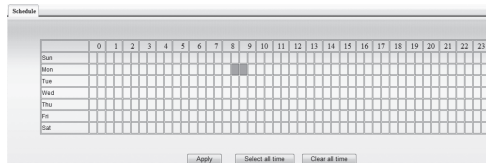


Please click “apply” after the settings are done, and motion detection takes effect. The higher value, the higher sensitivity. The camera will trigger corresponding alarm when any change occurs in the detection area.

Alarm time setting

The device will trigger the alarm only during the scheduled time period, you can select the scheduled time according to your request. Example of figure below, set armed time

from Mon 8:30 to 9:30, you only need to click the corresponding time block to set them, the time block will become green when you selected.



Note: Please make sure your system time is correct before you set the alarm time period.

Advanced setting

User management

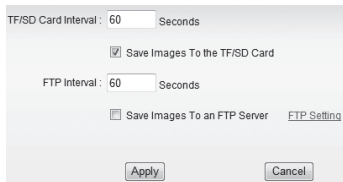
| privew | User Name | Password | Re-Type Password |
|---------------|-----------|----------|------------------|
| Administrator | admin | ***** | ***** |
| Operator | user | **** | **** |
| Guest | guest | ***** | ***** |

There are 3 levels of user authorization in it.

- Administrator: “admin” has the highest authority. It can do any settings. The factory default password: **123456**.
- User: user can only operate the device but can’t do any settings. The default password is **user**.
- Guest: User can view the video, but can’t operate the device. The default password is **guest**.

Note: Please change these 3 level passwords when your first use to ensure your safety.

Auto Capture Setting



TF/SD Card Interval : 60 Seconds

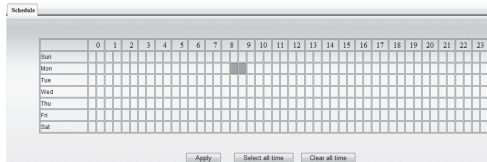
☒ Save Images To the TF/SD Card

FTP Interval : 60 Seconds

☐ Save Images To an FTP Server [FTP Setting](#)

Tick "Save Images to the TF/SD card", the snap pictures will be stored into SD card during the setting time.

Timer recording



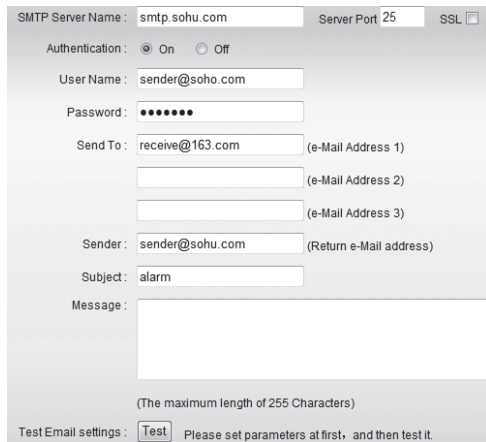
Schedule

| | 0 | 1 | 2 | 3 | 4 | 5 | 6 | 7 | 8 | 9 | 10 | 11 | 12 | 13 | 14 | 15 | 16 | 17 | 18 | 19 | 20 | 21 | 22 | 23 |
|-----|---|---|---|---|---|---|---|---|---|---|----|----|----|----|----|----|----|----|----|----|----|----|----|----|
| Sun | | | | | | | | | | | | | | | | | | | | | | | | |
| Mon | | | | | | | | | | | | | | | | | | | | | | | | |
| Tue | | | | | | | | | | | | | | | | | | | | | | | | |
| Wed | | | | | | | | | | | | | | | | | | | | | | | | |
| Thu | | | | | | | | | | | | | | | | | | | | | | | | |
| Fri | | | | | | | | | | | | | | | | | | | | | | | | |
| Sat | | | | | | | | | | | | | | | | | | | | | | | | |

Example: set recording time from Mon 8:30 to 9:30.

Tips: Please insert TF/SD card when the device power off.

E-mail Setting



SMTP Server Name : smtp.sohu.com Server Port 25 SSL ☐

Authentication : ☒ On ☐ Off

User Name : sender@sohu.com

Password : ••••••

Send To : receive@163.com (e-Mail Address 1)

(e-Mail Address 2)

(e-Mail Address 3)

Sender : sender@sohu.com (Return e-Mail address)

Subject : alarm

Message :

(The maximum length of 255 Characters)

Test Email settings : Please set parameters at first, and then test it.

The SMTP server name: It is mailbox server, for example of SOHU mailbox, it is "smtp.sohu.com". Please fill all blanks which we filled above as example. Otherwise, the settings will fail.

Please click "Test" to test if the E-mail setting is successful.

FTP setting

Server Address : 192.168.0.152

Server Port : 21

User Name : test

Password : •••••

Path : /

Passive Mode : ☒ On ☐ Off

Test FTP Settings : **Test** Please set parameters at first, and then test it.

Apply **Cancel**

Before to use FTP function, please get the following ready.

1. FTP user name and password
2. FTP storage space and the authority
3. Create sub-category to store the video or pictures.

Notice: The password should not contain special characters.

Multiple settings

Multiple Settings

The 1st device Native

The 2nd device None

The 3rd device None

The 4th device None

The 5th device None

The 6th device None

The 7th device None

The 8th device None

The 9th device None

Lan Search

002bspq(192.168.0.188)

Submit **Cancel** **Refresh**

Please set multiple devices here first to view 4 or 9 split screen.

System setting

Device information

Device ID : 002bspq

Current Client : 0

Network Connection : Wired Connection

Software Version : V0.1.2.10

Web Version : V0.0.0.1

Mac Address : 78:A5:DD:09:1E:50

IP Address : 192.168.0.188

Subnet Mask : 255.255.255.0

Default Gateway : 192.168.0.1

Preferred DNS Server : 202.96.134.133

Secondary DNS : 202.96.128.166

Running Time : 2013-02-03 11:45:27

TF/SD Status : Have Card(The Total Capacity of : 7759028KB The Rerr

[View the Contents of the TF/SD Card](#) [Format the TF/SD Card](#) [Stop the TF/SD Card](#)

SD status shows the free capacity if SD card is installed.

Notice: the device supports up to 32GB SD card. Please format the SD card to FAT32 before use the card on camera.

Date and time setting

Current Date & Time : 2013-01-18 12:53:18

Network Time Protocol ☒

NTP Server : time.windows.com ▼

Time Zone : (GMT+08:00) Beijing,Chongqing,Hong Kong,Urumqi ▼

Sync With Computer Time Apply

Please select the time zone at first and then select a NTP server and obtain time from network time server.

Initialize setting

Reboot Camera : Confirm

Restore Factory Default : Confirm

Backup Settings Data : Confirm

Restore Settings Data : Browse Confirm

Firmware Upgrade : Browse Confirm

If you click "Confirm" of Backup setting data, the camera will create a file, you can store it to your computer, and you can directly call this file to restore the settings. The function helps to manage the cameras and no need to do all the settings again.

The firmware upgrade is for updating system firmware and web UI.

System Log

| System Log | | |
|-----------------------|-------------|--------------------------|
| [2013_01_17 20:36:23] | ipc_server | start. |
| [2013_01_18 10:52:00] | user(admin) | login for live stream. |
| [2013_01_18 11:02:43] | user(admin) | logout from live stream. |
| [2013_01_18 11:03:09] | user(admin) | login for live stream. |
| [2013_01_18 11:04:17] | user(admin) | logout from live stream. |
| [2013_01_18 11:06:42] | user(admin) | login for live stream. |
| [2013_01_18 11:08:12] | user(admin) | logout from live stream. |
| [2013_01_18 12:38:21] | user(admin) | login for live stream. |
| [2013_01_18 12:39:15] | user(admin) | logout from live stream. |

Due to continuous development specification and appearance of product are subject to change without prior notice. For technical support please visit www.media-tech.eu.